

Product datasheet for **TA344040**

neurobeachin like 1 (NBEAL1) Rabbit Polyclonal Antibody

Product data:

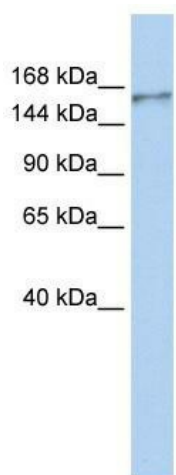
Product Type:	Primary Antibodies
Applications:	WB
Recommended Dilution:	WB
Reactivity:	Human
Host:	Rabbit
Isotype:	IgG
Clonality:	Polyclonal
Immunogen:	The immunogen for anti-NBEAL1 antibody: synthetic peptide directed towards the N terminal of human NBEAL1. Synthetic peptide located within the following region: KDNDKNMSTEDTKKNSDEKTDEEKITSFASANVSSDQWSLEDRHSLDSNT
Formulation:	Liquid. Purified antibody supplied in 1x PBS buffer with 0.09% (w/v) sodium azide and 2% sucrose. <i>Note that this product is shipped as lyophilized powder to China customers.</i>
Purification:	Affinity Purified
Conjugation:	Unconjugated
Storage:	Store at -20°C as received.
Stability:	Stable for 12 months from date of receipt.
Predicted Protein Size:	153 kDa
Gene Name:	neurobeachin like 1
Database Link:	NP_945183 Entrez Gene 65065 Human Q6ZS30
Background:	NBEAL1 belongs to the WD repeat neurobeachin family. It contains 1 BEACH domain and 2 WD repeats. NBEAL1 is highly expressed in brain, kidney, prostate and testis and weakly expressed in ovary, small intestine, colon and peripheral blood leukocytes. It may be correlative to several tumors, such as ovary serous adenocarcinoma and metastasis mammary gland carcinoma breast.
Synonyms:	A530083I02Rik; ALS2CR16; ALS2CR17; FLJ22838; FLJ26555; MGC164581; MGC168834



[View online »](#)

Note: Immunogen Sequence Homology: Human: 100%; Dog: 79%; Pig: 77%; Guinea pig: 77%

Product images:



WB Suggested Anti-NBEAL1 Antibody Titration:
0.2-1 ug/ml; ELISA Titer: 1: 12500; Positive
Control: MCF7 cell lysate