

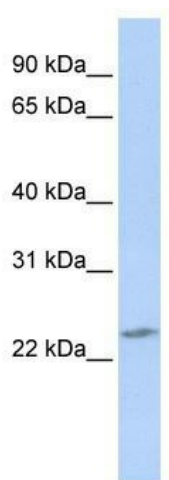
Product datasheet for **TA344038**

RBPMS2 Rabbit Polyclonal Antibody

Product data:

Product Type:	Primary Antibodies
Applications:	WB
Recommended Dilution:	WB
Reactivity:	Human
Host:	Rabbit
Isotype:	IgG
Clonality:	Polyclonal
Immunogen:	The immunogen for anti-RBPMS2 antibody: synthetic peptide directed towards the middle region of human RBPMS2. Synthetic peptide located within the following region: ANTKMAKSKLMATPNPSNVHPALGAHFIARDPYDLMGAALIPASPEAWAP
Formulation:	Liquid. Purified antibody supplied in 1x PBS buffer with 0.09% (w/v) sodium azide and 2% sucrose.
Purification:	Affinity Purified
Conjugation:	Unconjugated
Storage:	Store at -20°C as received.
Stability:	Stable for 12 months from date of receipt.
Predicted Protein Size:	22 kDa
Gene Name:	RNA binding protein with multiple splicing 2
Database Link:	NP_919248 Entrez Gene 348093 Human Q6ZRY4
Background:	RBPM2 contains 1 RRM (RNA recognition motif) domain. The exact function of RBPM2 remains unknown.
Synonyms:	RNA-binding protein with multiple splicing 2; RNA binding protein with multiple splicing 2
Note:	Immunogen Sequence Homology: Human: 100%; Rabbit: 93%; Zebrafish: 93%; Dog: 86%; Pig: 86%; Rat: 86%; Horse: 86%; Mouse: 86%; Guinea pig: 86%; Bovine: 79%


[View online »](#)

Product images:

WB Suggested Anti-RBPMS2 Antibody Titration:
0.2-1 ug/ml; ELISA Titer: 1: 62500; Positive
Control: Jurkat cell lysate