

## Product datasheet for **TA344036**

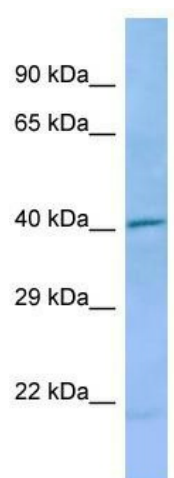
### Dnd1 Rabbit Polyclonal Antibody

#### Product data:

Product Type:	Primary Antibodies
Applications:	WB
Recommended Dilution:	WB
Reactivity:	Rat
Host:	Rabbit
Isotype:	IgG
Clonality:	Polyclonal
Immunogen:	The immunogen for Anti-Dnd1 antibody is: synthetic peptide directed towards the middle region of Rat Dnd1. Synthetic peptide located within the following region: KYGGPPPGWVGSPPPSGSEVFIGRLPQDVYEHQLIPLFQRVGRLYEFRLM
Formulation:	Liquid. Purified antibody supplied in 1x PBS buffer with 0.09% (w/v) sodium azide and 2% sucrose. <i>Note that this product is shipped as lyophilized powder to China customers.</i>
Purification:	Affinity Purified
Conjugation:	Unconjugated
Storage:	Store at -20°C as received.
Stability:	Stable for 12 months from date of receipt.
Predicted Protein Size:	38 kDa
Gene Name:	DND microRNA-mediated repression inhibitor 1
Database Link:	<a href="#">NP_001102849</a> <a href="#">Entrez Gene 679841 Rat</a>
Background:	The function of this protein remains unknown.
Synonyms:	MGC34750; RBMS4
Note:	Immunogen Sequence Homology: Dog: 100%; Pig: 100%; Horse: 100%; Human: 100%; Bovine: 100%; Rat: 93%; Guinea pig: 93%; Mouse: 86%



[View online »](#)

**Product images:**

Host: Rabbit; Target Name: Dnd1; Sample Tissue: Rat Small Intestine lysates; Antibody Dilution: 1.0 ug/ml