

Product datasheet for **TA344034**

HNRPA3 (HNRNPA3) Rabbit Polyclonal Antibody

Product data:

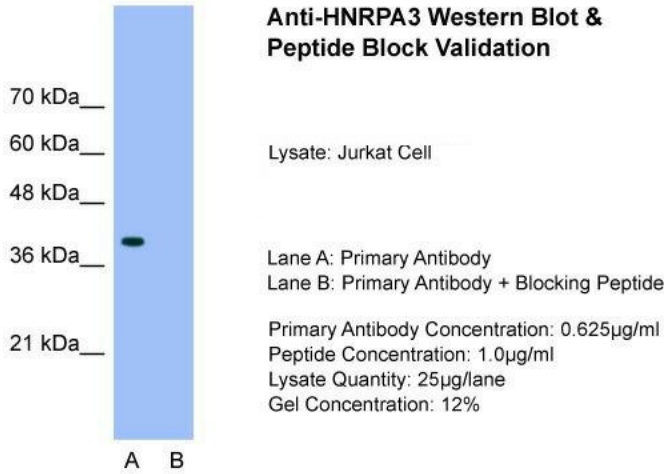
Product Type:	Primary Antibodies
Applications:	IHC, WB
Recommended Dilution:	WB, IHC
Reactivity:	Human
Host:	Rabbit
Isotype:	IgG
Clonality:	Polyclonal
Immunogen:	The immunogen for anti-HNRPA3 antibody: synthetic peptide directed towards the N terminal of human HNRPA3. Synthetic peptide located within the following region: MEVKPPPGRPQPDSGRRRRRRGEEGHDPKEPEQLRKLFIGGLSFETDDDS
Formulation:	Liquid. Purified antibody supplied in 1x PBS buffer with 0.09% (w/v) sodium azide and 2% sucrose. <i>Note that this product is shipped as lyophilized powder to China customers.</i>
Purification:	Protein A purified
Conjugation:	Unconjugated
Storage:	Store at -20°C as received.
Stability:	Stable for 12 months from date of receipt.
Predicted Protein Size:	42 kDa
Gene Name:	heterogeneous nuclear ribonucleoprotein A3
Database Link:	NP_919223 Entrez Gene 220988 Human P51991
Background:	HNRPA3 plays a role in cytoplasmic trafficking of RNA. It binds to the cis-acting response element(A2RE) and may be involved in pre-mRNA splicing
Synonyms:	2610510D13Rik; D10S102; FBRNP; HNRPA3
Note:	Immunogen Sequence Homology: Dog: 100%; Pig: 100%; Rat: 100%; Human: 100%; Mouse: 100%; Bovine: 100%; Rabbit: 100%; Guinea pig: 100%



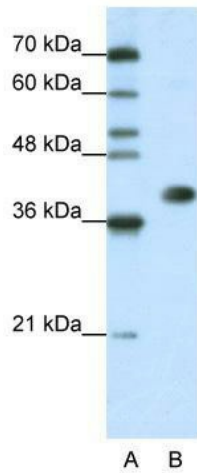
[View online »](#)

Protein Pathways: Spliceosome

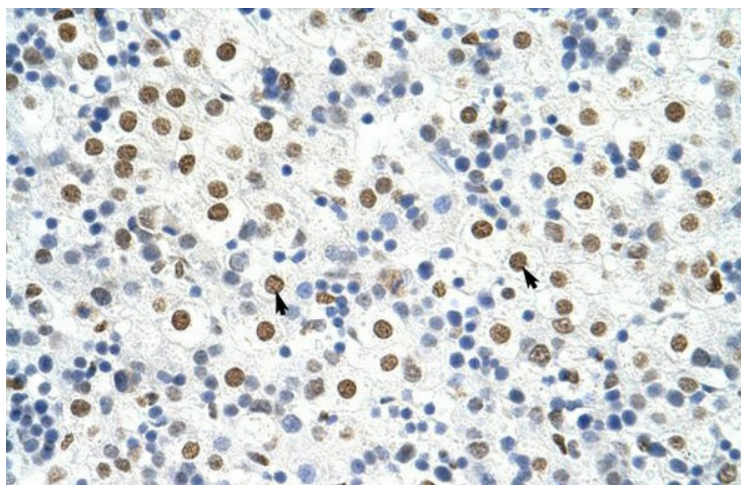
Product images:



Host: Rabbit; Target Name: HNRPA3; Sample Tissue: Jurkat; Lane A: Primary Antibody; Lane B: Primary Antibody + Blocking Peptide; Primary Antibody Concentration: 0.625 ug/mL; Peptide Concentration: 1.0 ug/mL; Lysate Quantity: 25 ug/lane; Gel Concentration:



WB Suggested Anti-HNRPA3 Antibody Titration: 1.25 ug/ml; Positive Control: Jurkat cell lysate; HNRNPA3 is strongly supported by BioGPS gene expression data to be expressed in Human Jurkat cells



Rabbit Anti-HNRPA3 Antibody; Paraffin Embedded Tissue: Human Liver; Cellular Data: Hepatocytes; Antibody Concentration: 4.0-8.0 ug/ml; Magnification: 400X