

Product datasheet for **TA344029**

NSUN6 Rabbit Polyclonal Antibody

Product data:

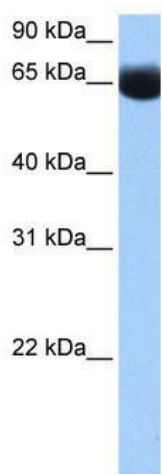
Product Type:	Primary Antibodies
Applications:	WB
Recommended Dilution:	WB
Reactivity:	Human
Host:	Rabbit
Isotype:	IgG
Clonality:	Polyclonal
Immunogen:	The immunogen for anti-NSUN6 antibody: synthetic peptide directed towards the N terminal of human NSUN6. Synthetic peptide located within the following region: MSIFPKISLRPEVENYLKEGFMNKEIVTALGKQEAERKFETLLKHLSHPP
Formulation:	Liquid. Purified antibody supplied in 1x PBS buffer with 0.09% (w/v) sodium azide and 2% sucrose.
Purification:	Affinity Purified
Conjugation:	Unconjugated
Storage:	Store at -20°C as received.
Stability:	Stable for 12 months from date of receipt.
Predicted Protein Size:	52 kDa
Gene Name:	NOP2/Sun RNA methyltransferase family member 6
Database Link:	NP_872349 Entrez Gene 221078 Human Q8TEA1
Background:	NSUN6 may have S-adenosyl-L-methionine-dependent methyl-transferase activity (Potential). NSUN6 belongs to the methyltransferase superfamily, RsmB/NOP family. It contains 1 PUA domain. Western blots using two different antibodies against two unique regions of this protein target confirm the same apparent molecular weight in our tests.
Synonyms:	4933414E04Rik; ARL5B-AS1; NOPD1
Note:	Immunogen Sequence Homology: Rat: 100%; Human: 100%; Mouse: 100%; Rabbit: 93%; Pig: 92%; Horse: 92%; Bovine: 92%; Guinea pig: 91%; Dog: 86%; Yeast: 75%



[View online »](#)

Protein Families: Druggable Genome

Product images:



WB Suggested Anti-NSUN6 Antibody Titration:
0.2-1 ug/ml; Positive Control: Human muscle