

Product datasheet for **TA344024**

Mrpl21 Rabbit Polyclonal Antibody

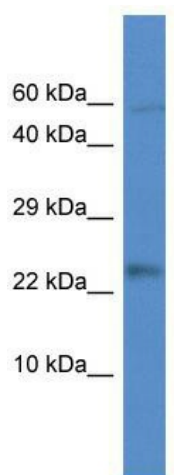
Product data:

Product Type:	Primary Antibodies
Applications:	WB
Recommended Dilution:	WB
Reactivity:	Mouse
Host:	Rabbit
Isotype:	IgG
Clonality:	Polyclonal
Immunogen:	The immunogen for anti-Mrpl21 antibody: synthetic peptide corresponding to a region of Mouse. Synthetic peptide located within the following region: LPDPVEETRHHADEVKRVNELIATGQYGRLFAVVFASHQWKVTAEDLIL
Formulation:	Liquid. Purified antibody supplied in 1x PBS buffer with 0.09% (w/v) sodium azide and 2% sucrose.
Purification:	Affinity Purified
Conjugation:	Unconjugated
Storage:	Store at -20°C as received.
Stability:	Stable for 12 months from date of receipt.
Predicted Protein Size:	24 kDa
Gene Name:	mitochondrial ribosomal protein L21
Database Link:	NP_758456 Entrez Gene 353242 Mouse Q9D1N9
Background:	The function of this protein remains unknown.
Synonyms:	L21mt; MGC62013; MRP-L21
Note:	Immunogen Sequence Homology: Rat: 100%; Human: 100%; Dog: 93%; Pig: 93%; Horse: 93%; Mouse: 93%; Guinea pig: 93%; Bovine: 86%



[View online »](#)

Product images:



WB Suggested Anti-Mrpl21 Antibody; Titration:
1.0 ug/ml; Positive Control: Mouse Liver