

## Product datasheet for **TA344023**

### **RALYL Rabbit Polyclonal Antibody**

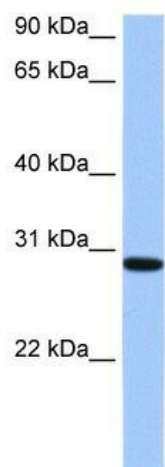
#### **Product data:**

<b>Product Type:</b>	Primary Antibodies
<b>Applications:</b>	WB
<b>Recommended Dilution:</b>	WB
<b>Reactivity:</b>	Human
<b>Host:</b>	Rabbit
<b>Isotype:</b>	IgG
<b>Clonality:</b>	Polyclonal
<b>Immunogen:</b>	The immunogen for anti-RALYL antibody: synthetic peptide directed towards the C terminal of human RALYL. Synthetic peptide located within the following region: AQKKQLEESLVLIQEECVSEIADHSTEEPAEGGPDADGEEMTDGIEEDFD
<b>Formulation:</b>	Liquid. Purified antibody supplied in 1x PBS buffer with 0.09% (w/v) sodium azide and 2% sucrose.
<b>Purification:</b>	Affinity Purified
<b>Conjugation:</b>	Unconjugated
<b>Storage:</b>	Store at -20°C as received.
<b>Stability:</b>	Stable for 12 months from date of receipt.
<b>Predicted Protein Size:</b>	32 kDa
<b>Gene Name:</b>	RALY RNA binding protein-like
<b>Database Link:</b>	<a href="#">NP_776247</a> <a href="#">Entrez Gene 138046 Human</a> <a href="#">Q86SE5</a>
<b>Background:</b>	RALYL belongs to the RRM HNRPC family, RALY subfamily. It contains 1 RRM (RNA recognition motif) domain. The functions of RALYL remain unknown.
<b>Synonyms:</b>	HNRPCL3
<b>Note:</b>	Immunogen Sequence Homology: Dog: 100%; Pig: 100%; Human: 100%; Horse: 93%; Bovine: 93%; Rabbit: 93%; Guinea pig: 86%; Mouse: 79%



[View online »](#)

## Product images:



WB Suggested Anti-RALYL Antibody Titration: 0.2-1 ug/ml; Positive Control: HepG2 cell lysate