

Product datasheet for **TA344022**

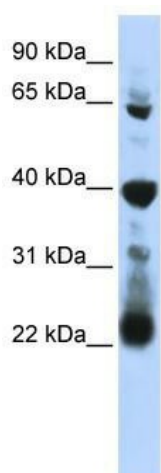
RPUSD3 Rabbit Polyclonal Antibody

Product data:

Product Type:	Primary Antibodies
Applications:	WB
Recommended Dilution:	WB
Reactivity:	Human
Host:	Rabbit
Isotype:	IgG
Clonality:	Polyclonal
Immunogen:	The immunogen for anti-RPUSD3 antibody: synthetic peptide directed towards the middle region of human RPUSD3. Synthetic peptide located within the following region: MVLQLCPVLGDHMY SARVGTVLGQRFLPAENNKPQRQVLDEALLRRLHL
Formulation:	Liquid. Purified antibody supplied in 1x PBS buffer with 0.09% (w/v) sodium azide and 2% sucrose.
Purification:	Affinity Purified
Conjugation:	Unconjugated
Storage:	Store at -20°C as received.
Stability:	Stable for 12 months from date of receipt.
Predicted Protein Size:	37 kDa
Gene Name:	RNA pseudouridylate synthase domain containing 3
Database Link:	NP_775930 Entrez Gene 285367 Human Q6P087
Background:	The specific function of RPUSD3 is not yet known.
Synonyms:	FLJ34707; FLJ37268; MGC29784
Note:	Immunogen Sequence Homology: Human: 100%; Pig: 93%; Rat: 86%; Mouse: 86%; Dog: 79%; Bovine: 79%



[View online »](#)

Product images:

WB Suggested Anti-RPUSD3 Antibody Titration:
0.2-1 ug/ml; ELISA Titer: 1: 62500; Positive
Control: 721_B cell lysate