

Product datasheet for **TA344021**

FAM71D Rabbit Polyclonal Antibody

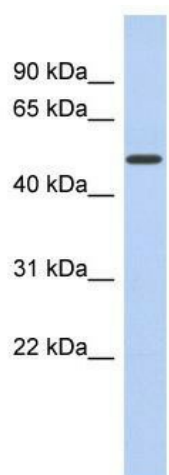
Product data:

Product Type:	Primary Antibodies
Applications:	WB
Recommended Dilution:	WB
Reactivity:	Human
Host:	Rabbit
Isotype:	IgG
Clonality:	Polyclonal
Immunogen:	The immunogen for anti-FAM71D antibody: synthetic peptide directed towards the middle region of human FAM71D. Synthetic peptide located within the following region: VTVVFENNDLIRAKQEEKEKLKNILKPGCLQDTKSKSELKESKHTISN
Formulation:	Liquid. Purified antibody supplied in 1x PBS buffer with 0.09% (w/v) sodium azide and 2% sucrose.
Purification:	Affinity Purified
Conjugation:	Unconjugated
Storage:	Store at -20°C as received.
Stability:	Stable for 12 months from date of receipt.
Predicted Protein Size:	46 kDa
Gene Name:	family with sequence similarity 71 member D
Database Link:	NP_775797 Entrez Gene 161142 Human Q8N9W8
Background:	The specific function of the protein remains unknown.
Synonyms:	C14orf54
Note:	Immunogen Sequence Homology: Human: 100%; Pig: 92%; Guinea pig: 92%; Rat: 82%; Dog: 77%; Horse: 77%



[View online »](#)

Product images:



WB Suggested Anti-FAM71D Antibody Titration:
0.2-1 ug/ml; ELISA Titer: 1: 62500; Positive
Control: Human kidney