

## Product datasheet for **TA344020**

### EIF4E3 Rabbit Polyclonal Antibody

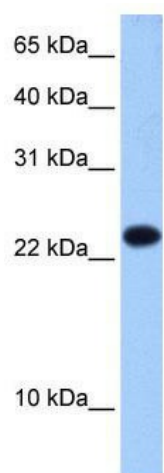
#### Product data:

Product Type:	Primary Antibodies
Applications:	WB
Recommended Dilution:	WB
Reactivity:	Human
Host:	Rabbit
Isotype:	IgG
Clonality:	Polyclonal
Immunogen:	The immunogen for anti-EIF4E3 antibody: synthetic peptide directed towards the middle region of human EIF4E3. Synthetic peptide located within the following region: VQVWNVNASLVGEATVLEKIYELLPHITFKAVFYKPHEEHHAFFEGGRGKH
Formulation:	Liquid. Purified antibody supplied in 1x PBS buffer with 0.09% (w/v) sodium azide and 2% sucrose.
Purification:	Affinity Purified
Conjugation:	Unconjugated
Storage:	Store at -20°C as received.
Stability:	Stable for 12 months from date of receipt.
Predicted Protein Size:	24 kDa
Gene Name:	eukaryotic translation initiation factor 4E family member 3
Database Link:	<a href="#">NP_001128121</a> <a href="#">Entrez Gene 317649 Human</a> <a href="#">Q8N5X7</a>
Background:	EIF4E3 belongs to the EIF4E family of translational initiation factors that interact with the 5-prime cap structure of mRNA and recruit mRNA to the ribosome.
Synonyms:	eIF-4E3; eIF4E-3
Note:	Immunogen Sequence Homology: Dog: 100%; Pig: 100%; Rat: 100%; Horse: 100%; Human: 100%; Mouse: 100%; Bovine: 100%; Rabbit: 100%; Zebrafish: 100%; Guinea pig: 100%



[View online »](#)

## Product images:



WB Suggested Anti-EIF4E3 Antibody Titration: 0.2-1 ug/ml; Positive Control: Human Liver