

## Product datasheet for **TA344018**

### SF4 (SUGP1) Rabbit Polyclonal Antibody

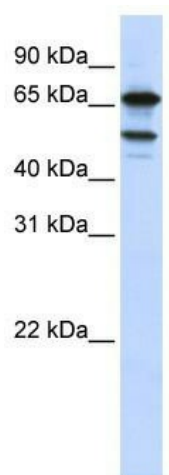
#### Product data:

Product Type:	Primary Antibodies
Applications:	WB
Recommended Dilution:	WB
Reactivity:	Human
Host:	Rabbit
Isotype:	IgG
Clonality:	Polyclonal
Immunogen:	The immunogen for anti-SF4 antibody: synthetic peptide directed towards the middle region of human SF4. Synthetic peptide located within the following region: TFKALKEGREPDYSEYKEFKLTVENIGYQMLMKMGWKEGEGLGSEGQGIK
Formulation:	Liquid. Purified antibody supplied in 1x PBS buffer with 0.09% (w/v) sodium azide and 2% sucrose.
Purification:	Affinity Purified
Conjugation:	Unconjugated
Storage:	Store at -20°C as received.
Stability:	Stable for 12 months from date of receipt.
Predicted Protein Size:	72 kDa
Gene Name:	SURP and G-patch domain containing 1
Database Link:	<a href="#">NP_757386</a> <a href="#">Entrez Gene 57794 Human</a> <a href="#">Q8IWZ8</a>
Background:	SF4 is a member of the SURP family of splicing factors. SF4 is a member of the SURP family of splicing factors. [supplied by OMIM]
Synonyms:	F23858; RBP; SF4
Note:	Immunogen Sequence Homology: Dog: 100%; Pig: 100%; Rat: 100%; Horse: 100%; Human: 100%; Mouse: 100%; Bovine: 100%; Guinea pig: 100%; Rabbit: 93%; Zebrafish: 93%



[View online »](#)

## Product images:



WB Suggested Anti-SF4 Antibody Titration: 0.2-1 ug/ml; ELISA Titer: 1: 312500; Positive Control: HeLa cell lysate; SUGP1 is supported by BioGPS gene expression data to be expressed in HeLa