

Product datasheet for **TA344017**

MSI2 Rabbit Polyclonal Antibody

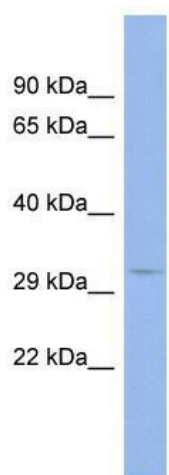
Product data:

Product Type:	Primary Antibodies
Applications:	WB
Recommended Dilution:	WB
Reactivity:	Human
Host:	Rabbit
Isotype:	IgG
Clonality:	Polyclonal
Immunogen:	The immunogen for anti-MSI2 antibody: synthetic peptide directed towards the middle region of human MSI2. Synthetic peptide located within the following region: YTMDAFMLGMGMLGYPNFVATYGRGYPGFAPSYGYQFPDYLPVSQDIIFI
Formulation:	Liquid. Purified antibody supplied in 1x PBS buffer with 0.09% (w/v) sodium azide and 2% sucrose. <i>Note that this product is shipped as lyophilized powder to China customers.</i>
Purification:	Affinity Purified
Conjugation:	Unconjugated
Storage:	Store at -20°C as received.
Stability:	Stable for 12 months from date of receipt.
Predicted Protein Size:	28 kDa
Gene Name:	musashi RNA binding protein 2
Database Link:	NP_733839 Entrez Gene 124540 Human Q96DH6
Background:	MSI2 contains two conserved tandem RNA recognition motifs. Similar proteins in other species function as RNA-binding proteins and play central roles in posttranscriptional gene regulation.
Synonyms:	MSI2H
Note:	Immunogen Sequence Homology: Human: 100%



[View online »](#)

Product images:



WB Suggested Anti-MSI2 Antibody Titration: 0.2-1 ug/ml; ELISA Titer: 1: 1562500; Positive Control: Human Small Intestine