

Product datasheet for **TA344015**

SEPSECS Rabbit Polyclonal Antibody

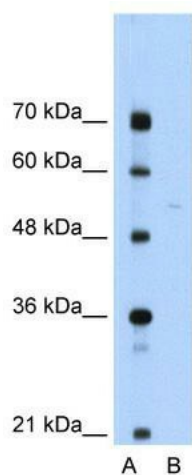
Product data:

Product Type:	Primary Antibodies
Applications:	IHC, WB
Recommended Dilution:	WB, IHC
Reactivity:	Human
Host:	Rabbit
Isotype:	IgG
Clonality:	Polyclonal
Immunogen:	The immunogen for anti-SLA antibody: synthetic peptide directed towards the N terminal of human SLA/LP. Synthetic peptide located within the following region: MDSNNFLGNCGVGEREGRVASALVARRHYRFIHGIGRSGDISAVQPKAAG
Formulation:	Liquid. Purified antibody supplied in 1x PBS buffer with 0.09% (w/v) sodium azide and 2% sucrose. <i>Note that this product is shipped as lyophilized powder to China customers.</i>
Purification:	Affinity Purified
Conjugation:	Unconjugated
Storage:	Store at -20°C as received.
Stability:	Stable for 12 months from date of receipt.
Predicted Protein Size:	49 kDa
Database Link:	NP_722547 Entrez Gene 51091 Human
Background:	SLA/LP converts O-phosphoserine-tRNA(Sec) to selenocysteinyl-tRNA(Sec) required for selenoprotein biosynthesis.
Synonyms:	liver pancreas antigen; LP; MGC161491; Sep (O-phosphoserine) tRNA:Sec (selenocysteine) tRNA synthase; SLA; soluble liver antigen
Note:	Immunogen Sequence Homology: Dog: 100%; Pig: 100%; Rat: 100%; Horse: 100%; Human: 100%; Mouse: 100%; Bovine: 100%; Rabbit: 100%; Guinea pig: 100%; Zebrafish: 93%
Protein Pathways:	Aminoacyl-tRNA biosynthesis

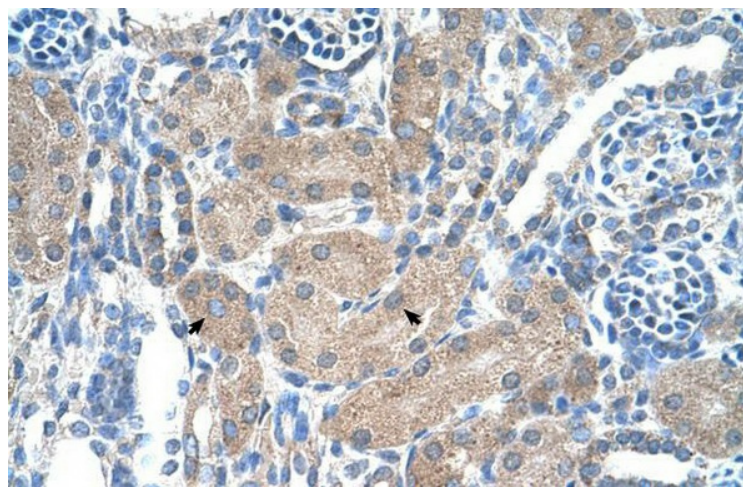


[View online »](#)

Product images:



WB Suggested Anti-SLA Antibody Titration: 0.2-1 ug/ml; ELISA Titer: 1: 312500; Positive Control: Jurkat cell lysate



Rabbit Anti-SLA/LP Antibody; Paraffin Embedded Tissue: Human Kidney; Cellular Data: Epithelial cells of renal tubule; Antibody Concentration: 4.0-8.0 ug/ml; Magnification: 400X