

## Product datasheet for **TA344013**

### HEXO (ERI1) Rabbit Polyclonal Antibody

#### Product data:

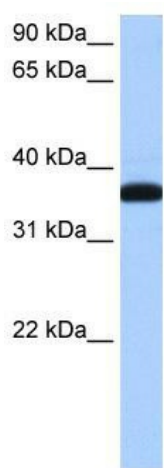
Product Type:	Primary Antibodies
Applications:	WB
Recommended Dilution:	WB
Reactivity:	Human
Host:	Rabbit
Isotype:	IgG
Clonality:	Polyclonal
Immunogen:	The immunogen for anti-THEX1 antibody: synthetic peptide directed towards the N terminal of human HEX1. Synthetic peptide located within the following region: EPPRPSPEETQQCKFDGQETKGSKFITSSASDFSDPVYKEIAITNGCINR
Formulation:	Liquid. Purified antibody supplied in 1x PBS buffer with 0.09% (w/v) sodium azide and 2% sucrose. <i>Note that this product is shipped as lyophilized powder to China customers.</i>
Purification:	Affinity Purified
Conjugation:	Unconjugated
Storage:	Store at -20°C as received.
Stability:	Stable for 12 months from date of receipt.
Predicted Protein Size:	40 kDa
Gene Name:	exoribonuclease 1
Database Link:	<a href="#">NP_699163</a> <a href="#">Entrez Gene 90459 Human</a> <a href="#">Q8IV48</a>
Background:	THEX1 contains 1 SAP domain and 1 exonuclease domain. It is an RNA exonuclease that binds to the 3' end of histone mRNAs and probably degrades them, suggesting that it plays an essential role in histone mRNA decay after replication. It is also able to degrade the 3' overhangs of short interfering RNAs (siRNAs) in vitro, suggesting a possible role as regulator of RNA interference (RNAi).
Synonyms:	3 HEXO; 3'HEXO; HEXO; THEX1



[View online »](#)

**Note:** Immunogen Sequence Homology: Dog: 100%; Human: 100%; Rabbit: 100%; Pig: 93%; Bovine: 93%; Horse: 86%; Guinea pig: 86%; Mouse: 85%; Rat: 79%

### Product images:



WB Suggested Anti-THEX1 Antibody Titration: 0.2-1 ug/ml; Positive Control: MCF7 cell lysate