

Product datasheet for **TA344012**

RBM24 Rabbit Polyclonal Antibody

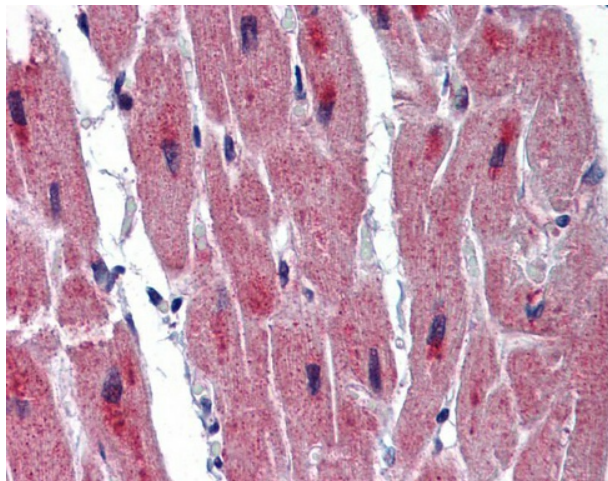
Product data:

| | |
|--------------------------------|---|
| Product Type: | Primary Antibodies |
| Applications: | IHC |
| Recommended Dilution: | WB, IHC |
| Reactivity: | Human |
| Host: | Rabbit |
| Isotype: | IgG |
| Clonality: | Polyclonal |
| Immunogen: | The immunogen for anti-RBM24 antibody: synthetic peptide directed towards the middle region of human RBM24. Synthetic peptide located within the following region: VTAGGYGYAVQQPITAAAPGTAAAAAAAAAAAAAFGQYQPQQLQTDRMQ |
| Formulation: | Liquid. Purified antibody supplied in 1x PBS buffer with 0.09% (w/v) sodium azide and 2% sucrose. <i>Note that this product is shipped as lyophilized powder to China customers.</i> |
| Purification: | Affinity Purified |
| Conjugation: | Unconjugated |
| Storage: | Store at -20°C as received. |
| Stability: | Stable for 12 months from date of receipt. |
| Predicted Protein Size: | 19 kDa |
| Gene Name: | RNA binding motif protein 24 |
| Database Link: | NP_694565 Entrez Gene 221662 Human Q9BX46 |
| Background: | The function of this protein remains unknown. |
| Synonyms: | dj259A10.1; RNPC6 |
| Note: | Immunogen Sequence Homology: Pig: 100%; Rat: 100%; Horse: 100%; Human: 100%; Mouse: 100%; Bovine: 100%; Guinea pig: 100%; Zebrafish: 86%; Dog: 79% |
| Protein Families: | Druggable Genome |



[View online »](#)

Product images:



Heart