

Product datasheet for **TA344010**

RBM45 Rabbit Polyclonal Antibody

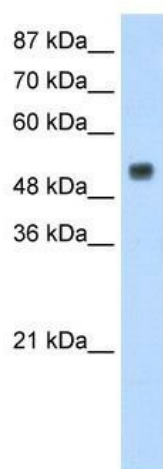
Product data:

Product Type:	Primary Antibodies
Applications:	WB
Recommended Dilution:	WB
Reactivity:	Human
Host:	Rabbit
Isotype:	IgG
Clonality:	Polyclonal
Immunogen:	The immunogen for anti-DRB1 antibody: synthetic peptide directed towards the N terminal of human DRB1. Synthetic peptide located within the following region: MDEAGSSASGGGFRPGVDSLDEPPNSRIFLVISKYTPESVLRERFSPFGD
Formulation:	Liquid. Purified antibody supplied in 1x PBS buffer with 0.09% (w/v) sodium azide and 2% sucrose.
Purification:	Protein A purified
Conjugation:	Unconjugated
Storage:	Store at -20°C as received.
Stability:	Stable for 12 months from date of receipt.
Predicted Protein Size:	36 kDa
Gene Name:	RNA binding motif protein 45
Database Link:	NP_694453 Entrez Gene 129831 Human Q8IUH3
Background:	DRB1 is RNA-binding protein with binding specificity for poly(C) and may play an important role in neural development.
Synonyms:	DRB1; RB-1
Note:	Immunogen Sequence Homology: Dog: 100%; Pig: 100%; Rat: 100%; Human: 100%; Mouse: 100%; Rabbit: 100%; Guinea pig: 100%; Horse: 93%; Bovine: 93%



[View online »](#)

Product images:



WB Suggested Anti-DRB1 Antibody Titration: 1.25 ug/ml; Positive Control: HepG2 cell lysate