

Product datasheet for **TA344008**

DCP2 Rabbit Polyclonal Antibody

Product data:

Product Type:	Primary Antibodies
Applications:	WB
Recommended Dilution:	WB
Reactivity:	Human
Host:	Rabbit
Isotype:	IgG
Clonality:	Polyclonal
Immunogen:	The immunogen for anti-DCP2 antibody: synthetic peptide directed towards the middle region of human DCP2. Synthetic peptide located within the following region: KQYQDSPNQKKRTNGLQPAKQQNSLMKCEKKLHPRKLQDNFETDAVYDLP
Formulation:	Liquid. Purified antibody supplied in 1x PBS buffer with 0.09% (w/v) sodium azide and 2% sucrose. <i>Note that this product is shipped as lyophilized powder to China customers.</i>
Purification:	Affinity Purified
Conjugation:	Unconjugated
Storage:	Store at -20°C as received.
Stability:	Stable for 12 months from date of receipt.
Predicted Protein Size:	48 kDa
Gene Name:	decapping mRNA 2
Database Link:	NP_689837 Entrez Gene 167227 Human Q8IU60



[View online »](#)

Background:

DCP2 is a key component of an mRNA-decapping complex required for removal of the 5-prime cap from mRNA prior to its degradation from the 5-prime end. DCP2 is a key component of an mRNA-decapping complex required for removal of the 5-prime cap from mRNA prior to its degradation from the 5-prime end (Fenger-Gron et al., 2005 [PubMed 16364915]). [supplied by OMIM]. Publication Note: This RefSeq record includes a subset of the publications that are available for this gene. Please see the Entrez Gene record to access additional publications. PRIMARYREFSEQ_SPAN PRIMARY_IDENTIFIER PRIMARY_SPAN COMP 1-539 AY135173.1 1-539 540-1992 AK090564.1 481-1933 1993-8947 AC008536.7 154323-161277

Synonyms:

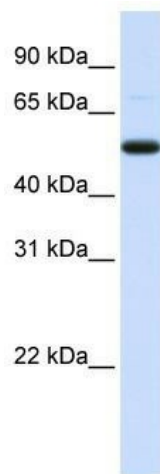
NUDT20

Note:

Immunogen Sequence Homology: Dog: 100%; Rat: 100%; Human: 100%; Pig: 93%; Horse: 93%; Mouse: 93%; Rabbit: 86%; Guinea pig: 86%; Bovine: 79%

Protein Pathways:

RNA degradation

Product images:

WB Suggested Anti-DCP2 Antibody Titration: 0.2-1 ug/ml; ELISA Titer: 1: 312500; Positive Control: Human Placenta