

## Product datasheet for **TA344007**

### **APOBEC3D Rabbit Polyclonal Antibody**

#### **Product data:**

<b>Product Type:</b>	Primary Antibodies
<b>Applications:</b>	IHC, WB
<b>Recommended Dilution:</b>	WB, IHC
<b>Reactivity:</b>	Human
<b>Host:</b>	Rabbit
<b>Isotype:</b>	IgG
<b>Clonality:</b>	Polyclonal
<b>Immunogen:</b>	The immunogen for anti-APOBEC3D antibody: synthetic peptide directed towards the N terminal of human APOBEC3D. Synthetic peptide located within the following region: SYTWLCYEYKIKRGRSNLLWDTGVFRGPVLPKRQSNHRQEVYFRFENHAE
<b>Formulation:</b>	Liquid. Purified antibody supplied in 1x PBS buffer with 0.09% (w/v) sodium azide and 2% sucrose. <i>Note that this product is shipped as lyophilized powder to China customers.</i>
<b>Purification:</b>	Affinity Purified
<b>Conjugation:</b>	Unconjugated
<b>Storage:</b>	Store at -20°C as received.
<b>Stability:</b>	Stable for 12 months from date of receipt.
<b>Predicted Protein Size:</b>	30 kDa
<b>Gene Name:</b>	apolipoprotein B mRNA editing enzyme catalytic subunit 3D
<b>Database Link:</b>	<a href="#">NP_689639</a> <a href="#">Entrez Gene 140564 Human</a>



[View online »](#)

**Background:**

This gene is a member of the cytidine deaminase gene family. It is one of seven related genes or pseudogenes found in a cluster, thought to result from gene duplication, on chromosome 22. Members of the cluster encode proteins that are structurally and functionally related to the C to U RNA-editing cytidine deaminase APOBEC1 and inhibit retroviruses, such as HIV, by deaminating cytosine residues in nascent retroviral cDNA. This gene is a member of the cytidine deaminase gene family. It is one of seven related genes or pseudogenes found in a cluster, thought to result from gene duplication, on chromosome 22. Members of the cluster encode proteins that are structurally and functionally related to the C to U RNA-editing cytidine deaminase APOBEC1 and inhibit retroviruses, such as HIV, by deaminating cytosine residues in nascent retroviral cDNA.

**Synonyms:**

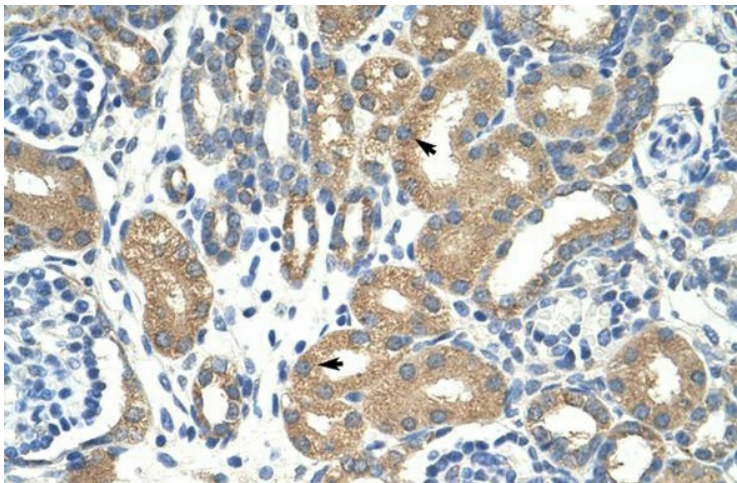
A3D; APOBEC3DE; APOBEC3E; ARP6

**Note:**

Immunogen Sequence Homology: Human: 100%

**Product images:**

WB Suggested Anti-APOBEC3D Antibody  
Titration: 0.2-1 ug/ml; Positive Control: HepG2 cell  
lysate



Rabbit Anti-APOBEC3D Antibody; Paraffin  
Embedded Tissue: Human Kidney; Cellular Data:  
Epithelial cells of renal tubule; Antibody  
Concentration: 4.0-8.0 ug/ml; Magnification: 400X