

Product datasheet for **TA344006**

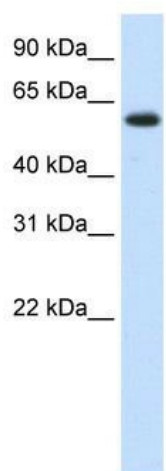
DIS3L2 Rabbit Polyclonal Antibody

Product data:

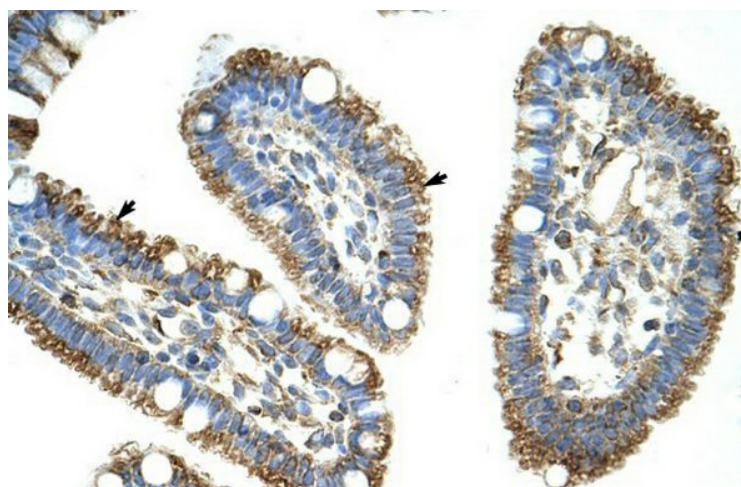
Product Type:	Primary Antibodies
Applications:	IHC, WB
Recommended Dilution:	WB, IHC
Reactivity:	Human
Host:	Rabbit
Isotype:	IgG
Clonality:	Polyclonal
Immunogen:	The immunogen for anti-MGC42174 antibody: synthetic peptide directed towards the N terminal of human MGC42174. Synthetic peptide located within the following region: MSHPDYRMNLRPLGTPRGVSAVAGPHDIGASPGDKKSKNRSTRGKKKSIF
Formulation:	Liquid. Purified antibody supplied in 1x PBS buffer with 0.09% (w/v) sodium azide and 2% sucrose.
Purification:	Protein A purified
Conjugation:	Unconjugated
Storage:	Store at -20°C as received.
Stability:	Stable for 12 months from date of receipt.
Predicted Protein Size:	68 kDa
Gene Name:	DIS3 like 3'-5' exoribonuclease 2
Database Link:	NP_689596 Entrez Gene 129563 Human Q8IYB7
Background:	The function remains unknown.
Synonyms:	FAM6A; hDIS3L2; PRLMNS
Note:	Immunogen Sequence Homology: Human: 100%; Dog: 86%; Pig: 86%; Rat: 86%; Horse: 86%; Mouse: 86%; Rabbit: 86%; Guinea pig: 86%; Bovine: 79%



[View online »](#)

Product images:

WB Suggested Anti-MGC42174 Antibody Titration: 1.25 ug/ml; Positive Control: Human Muscle



Rabbit Anti-MGC42174 Antibody; Paraffin Embedded Tissue: Human Intestine; Cellular Data: Epithelial cells of intestinal villas; Antibody Concentration: 4.0-8.0 ug/ml; Magnification: 400X