

## Product datasheet for **TA344005**

### DIS3L2 Rabbit Polyclonal Antibody

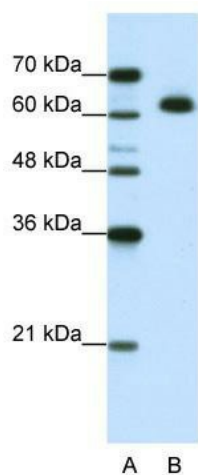
#### Product data:

Product Type:	Primary Antibodies
Applications:	IHC, WB
Recommended Dilution:	WB, IHC
Reactivity:	Human
Host:	Rabbit
Isotype:	IgG
Clonality:	Polyclonal
Immunogen:	The immunogen for anti-MGC42174 antibody: synthetic peptide directed towards the N terminal of human MGC42174. Synthetic peptide located within the following region: WKVVKPESNDKETEAAYESDIPEELCGHHLPQQSLKSYNDSPDVIVEAQF
Formulation:	Liquid. Purified antibody supplied in 1x PBS buffer with 0.09% (w/v) sodium azide and 2% sucrose. <i>Note that this product is shipped as lyophilized powder to China customers.</i>
Purification:	Protein A purified
Conjugation:	Unconjugated
Storage:	Store at -20°C as received.
Stability:	Stable for 12 months from date of receipt.
Predicted Protein Size:	68 kDa
Gene Name:	DIS3 like 3'-5' exoribonuclease 2
Database Link:	<a href="#">NP_689596</a> <a href="#">Entrez Gene 129563 Human</a> <a href="#">Q8IYB7</a>
Background:	The function remains unknown.
Synonyms:	FAM6A; hDIS3L2; PRLMNS
Note:	Immunogen Sequence Homology: Human: 100%; Pig: 93%; Bovine: 93%; Dog: 86%; Rat: 86%; Horse: 86%; Mouse: 86%; Guinea pig: 86%; Rabbit: 79%

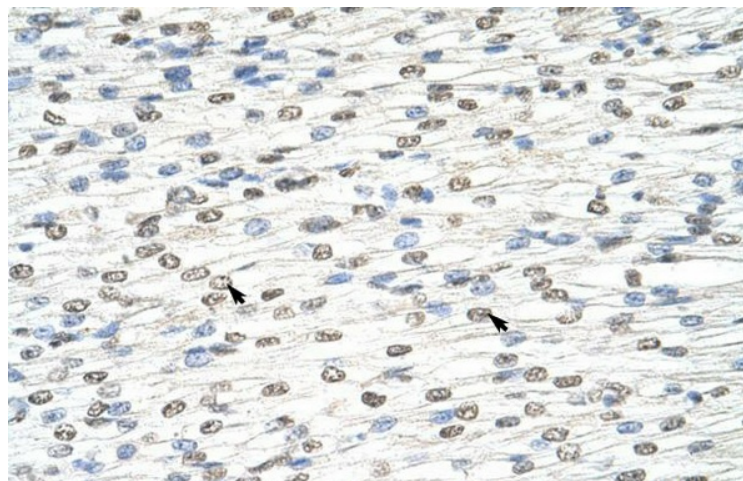


[View online »](#)

## Product images:



WB Suggested Anti-MGC42174 Antibody Titration:  
1.25 ug/ml; ELISA Titer: 1: 62500; Positive Control:  
Jurkat cell lysate



Rabbit Anti-MGC42174 Antibody; Paraffin  
Embedded Tissue: Human Heart; Cellular Data:  
Myocardial cells; Antibody Concentration: 4.0-8.0  
ug/ml; Magnification: 400X