

## Product datasheet for **TA344004**

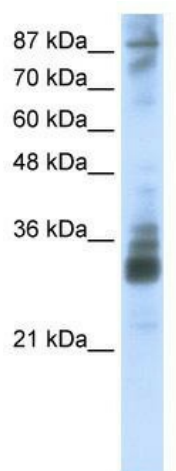
### RG9MTD2 (TRMT10A) Rabbit Polyclonal Antibody

#### Product data:

Product Type:	Primary Antibodies
Applications:	WB
Recommended Dilution:	WB
Reactivity:	Human
Host:	Rabbit
Isotype:	IgG
Clonality:	Polyclonal
Immunogen:	The immunogen for anti-RG9MTD2 antibody: synthetic peptide directed towards the middle region of human RG9MTD2. Synthetic peptide located within the following region: EDLIYLTSDSPNILKELDESKAYVIGGLVDHNNHKGGLTYKQASDYGINHA
Formulation:	Liquid. Purified antibody supplied in 1x PBS buffer with 0.09% (w/v) sodium azide and 2% sucrose.
Purification:	Protein A purified
Conjugation:	Unconjugated
Storage:	Store at -20°C as received.
Stability:	Stable for 12 months from date of receipt.
Predicted Protein Size:	37 kDa
Gene Name:	tRNA methyltransferase 10A
Database Link:	<a href="#">NP_689505</a> <a href="#">Entrez Gene 93587 Human</a> <a href="#">Q8TBZ6</a>
Background:	The function remains unknown.
Synonyms:	HEL-S-88; MSSGM; MSSGM1; RG9MTD2; TRM10
Note:	Immunogen Sequence Homology: Dog: 100%; Pig: 100%; Human: 100%; Bovine: 100%; Rat: 93%; Rabbit: 93%; Guinea pig: 93%; Horse: 92%; Mouse: 79%



[View online »](#)

**Product images:**

WB Suggested Anti-RG9MTD2 Antibody Titration:  
2.5 ug/ml; Positive Control: HepG2 cell lysate