

Product datasheet for **TA344002**

RPUSD2 Rabbit Polyclonal Antibody

Product data:

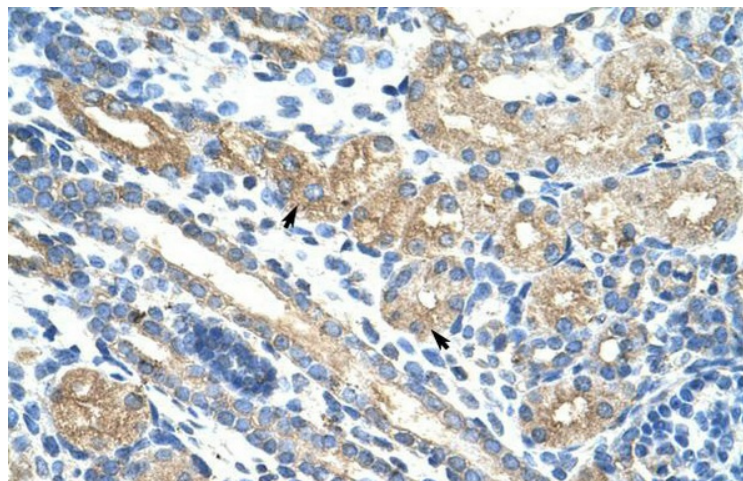
Product Type:	Primary Antibodies
Applications:	IHC, WB
Recommended Dilution:	WB, IHC
Reactivity:	Human
Host:	Rabbit
Isotype:	IgG
Clonality:	Polyclonal
Immunogen:	The immunogen for anti-RPUSD2 antibody: synthetic peptide directed towards the N terminal of human RPUSD2. Synthetic peptide located within the following region: LKDNDFLRNTVHRHEPPVTAEPIRLLAENEDVVVDKPSIPVHPCGRFR
Formulation:	Liquid. Purified antibody supplied in 1x PBS buffer with 0.09% (w/v) sodium azide and 2% sucrose. <i>Note that this product is shipped as lyophilized powder to China customers.</i>
Purification:	Protein A purified
Conjugation:	Unconjugated
Storage:	Store at -20°C as received.
Stability:	Stable for 12 months from date of receipt.
Predicted Protein Size:	60 kDa
Gene Name:	RNA pseudouridylate synthase domain containing 2
Database Link:	NP_689473 Entrez Gene 27079 Human Q8IZ73
Background:	The function remains unknown.
Synonyms:	C15orf19; C18B11
Note:	Immunogen Sequence Homology: Pig: 100%; Rat: 100%; Horse: 100%; Human: 100%; Mouse: 100%; Bovine: 100%; Rabbit: 100%; Guinea pig: 100%; Dog: 93%; Zebrafish: 86%



[View online »](#)

Product images:

WB Suggested Anti-RPUSD2 Antibody Titration:
5.0 ug/ml; Positive Control: HepG2 cell lysate



Rabbit Anti-RPUSD2 Antibody; Paraffin
Embedded Tissue: Human Kidney; Cellular Data:
Epithelial cells of renal tubule; Antibody
Concentration: 4.0-8.0 ug/ml; Magnification: 400X