

Product datasheet for **TA344001**

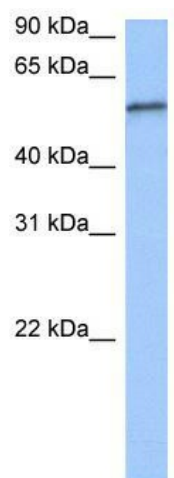
RPUSD2 Rabbit Polyclonal Antibody

Product data:

Product Type:	Primary Antibodies
Applications:	WB
Recommended Dilution:	WB
Reactivity:	Human
Host:	Rabbit
Isotype:	IgG
Clonality:	Polyclonal
Immunogen:	The immunogen for anti-RPUSD2 antibody: synthetic peptide directed towards the C terminal of human RPUSD2. Synthetic peptide located within the following region: AEHQAKQSLDVLDLCEGDLSPGLTDSTAPSELGKDDLEELAAAAQKMEE
Formulation:	Liquid. Purified antibody supplied in 1x PBS buffer with 0.09% (w/v) sodium azide and 2% sucrose. <i>Note that this product is shipped as lyophilized powder to China customers.</i>
Purification:	Affinity Purified
Conjugation:	Unconjugated
Storage:	Store at -20°C as received.
Stability:	Stable for 12 months from date of receipt.
Predicted Protein Size:	61 kDa
Gene Name:	RNA pseudouridylate synthase domain containing 2
Database Link:	NP_689473 Entrez Gene 27079 Human Q8IZ73
Background:	The function remains unknown.
Synonyms:	C15orf19; C18B11
Note:	Immunogen Sequence Homology: Human: 100%; Horse: 93%; Rat: 92%; Bovine: 86%; Mouse: 85%; Dog: 79%



[View online »](#)

Product images:

WB Suggested Anti-RPUSD2 Antibody Titration:
0.2-1 ug/ml; Positive Control: Jurkat cell lysate;
RPUSD2 is supported by BioGPS gene expression
data to be expressed in Jurkat