

Product datasheet for **TA343999**

RBM46 Rabbit Polyclonal Antibody

Product data:

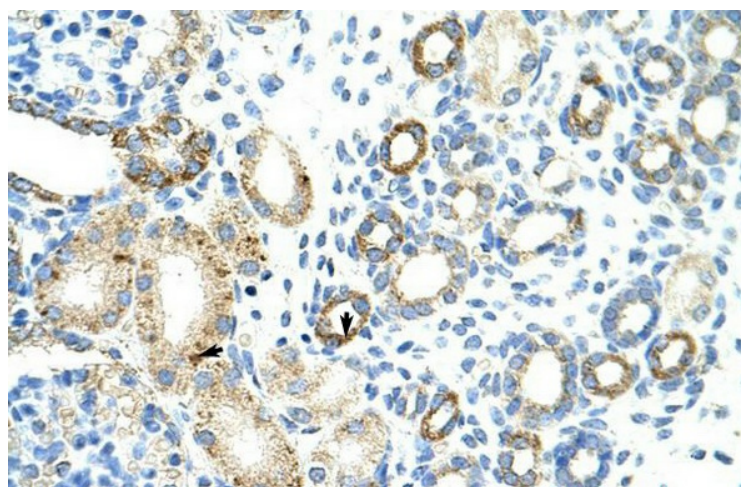
| | |
|--------------------------------|--|
| Product Type: | Primary Antibodies |
| Applications: | IHC, WB |
| Recommended Dilution: | WB, IHC |
| Reactivity: | Human |
| Host: | Rabbit |
| Isotype: | IgG |
| Clonality: | Polyclonal |
| Immunogen: | The immunogen for anti-MGC27016 antibody: synthetic peptide directed towards the N terminal of human MGC27016. Synthetic peptide located within the following region: LNNYEIRPGKFIGVCVSLDNCRLFIGAIPKEKKKEEILDEMKKVTEGVVD |
| Formulation: | Liquid. Purified antibody supplied in 1x PBS buffer with 0.09% (w/v) sodium azide and 2% sucrose. |
| Purification: | Affinity Purified |
| Conjugation: | Unconjugated |
| Storage: | Store at -20°C as received. |
| Stability: | Stable for 12 months from date of receipt. |
| Predicted Protein Size: | 59 kDa |
| Gene Name: | RNA binding motif protein 46 |
| Database Link: | NP_659416 Entrez Gene 166863 Human Q8TBY0 |
| Background: | The function remains unknown. |
| Synonyms: | CT68 |
| Note: | Immunogen Sequence Homology: Dog: 100%; Pig: 100%; Rat: 100%; Horse: 100%; Human: 100%; Mouse: 100%; Bovine: 100%; Rabbit: 100%; Guinea pig: 100%; Zebrafish: 77% |



[View online »](#)

Product images:

WB Suggested Anti-MGC27016 Antibody Titration: 0.2-1 ug/ml; Positive Control: Jurkat cell lysate



Rabbit Anti-MGC27016 Antibody; Paraffin Embedded Tissue: Human Kidney; Cellular Data: Epithelial cells of renal tubule; Antibody Concentration: 4.0-8.0 ug/ml; Magnification: 400X