

Product datasheet for **TA343998**

RG9MTD3 (TRMT10B) Rabbit Polyclonal Antibody

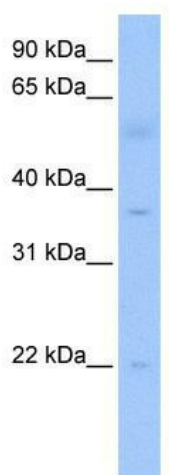
Product data:

Product Type:	Primary Antibodies
Applications:	WB
Recommended Dilution:	WB
Reactivity:	Human
Host:	Rabbit
Isotype:	IgG
Clonality:	Polyclonal
Immunogen:	The immunogen for anti-RG9MTD3 antibody: synthetic peptide directed towards the C terminal of human RG9MTD3. Synthetic peptide located within the following region: HALEDVDL NKVYILGGLVDESIQKKVTFQKAREYSVK TARLPIQEYMVRN
Formulation:	Liquid. Purified antibody supplied in 1x PBS buffer with 0.09% (w/v) sodium azide and 2% sucrose.
Purification:	Affinity Purified
Conjugation:	Unconjugated
Storage:	Store at -20°C as received.
Stability:	Stable for 12 months from date of receipt.
Predicted Protein Size:	36 kDa
Gene Name:	tRNA methyltransferase 10B
Database Link:	NP_659401 Entrez Gene 158234 Human Q6PF06
Background:	RG9MTD3 belongs to the RNA methyltransferase trmD family, TRM10 subfamily. It is a probable RNA methyltransferase.
Synonyms:	bA3J10.9; RG9MTD3
Note:	Immunogen Sequence Homology: Human: 100%; Mouse: 100%; Rat: 93%; Horse: 93%; Dog: 86%; Pig: 86%; Bovine: 86%; Rabbit: 86%; Guinea pig: 86%



[View online »](#)

Product images:



WB Suggested Anti-RG9MTD3 Antibody Titration:
0.2-1 ug/ml; Positive Control: Human heart