

Product datasheet for **TA343997**

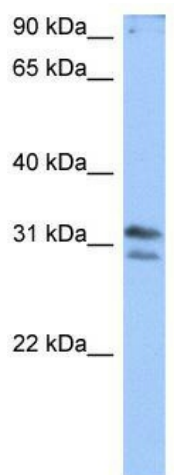
RG9MTD3 (TRMT10B) Rabbit Polyclonal Antibody

Product data:

Product Type:	Primary Antibodies
Applications:	WB
Recommended Dilution:	WB
Reactivity:	Human
Host:	Rabbit
Isotype:	IgG
Clonality:	Polyclonal
Immunogen:	The immunogen for anti-RG9MTD3 antibody: synthetic peptide directed towards the N terminal of human RG9MTD3. Synthetic peptide located within the following region: GEILATGSTAWCSKNVQRKQRHWEKIVAANKSKRKQEKERRKANRAENPG
Formulation:	Liquid. Purified antibody supplied in 1x PBS buffer with 0.09% (w/v) sodium azide and 2% sucrose. <i>Note that this product is shipped as lyophilized powder to China customers.</i>
Purification:	Affinity Purified
Conjugation:	Unconjugated
Storage:	Store at -20°C as received.
Stability:	Stable for 12 months from date of receipt.
Predicted Protein Size:	36 kDa
Gene Name:	tRNA methyltransferase 10B
Database Link:	NP_659401 Entrez Gene 158234 Human Q6PF06
Background:	RG9MTD3 belongs to the RNA methyltransferase trmD family, TRM10 subfamily. It is a probable RNA methyltransferase.
Synonyms:	bA3J10.9; RG9MTD3
Note:	Immunogen Sequence Homology: Dog: 100%; Pig: 100%; Horse: 100%; Human: 100%; Bovine: 100%; Rabbit: 100%; Rat: 93%; Mouse: 79%



[View online »](#)

Product images:


WB Suggested Anti-RG9MTD3 Antibody Titration:
0.2-1 ug/ml; Positive Control: Jurkat cell lysate