

Product datasheet for **TA343992**

JAKMIP1 Rabbit Polyclonal Antibody

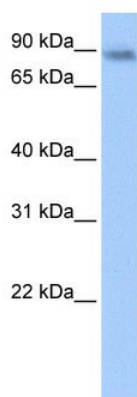
Product data:

Product Type:	Primary Antibodies
Recommended Dilution:	WB
Reactivity:	Human
Host:	Rabbit
Isotype:	IgG
Clonality:	Polyclonal
Immunogen:	The immunogen for anti-JAKMIP1 antibody: synthetic peptide directed towards the middle region of human JAKMIP1. Synthetic peptide located within the following region: FLRLQVLEQQHVIDDLSLERERLLRSKRHRGKSLKPPKHHVETFFGFDE
Formulation:	Liquid. Purified antibody supplied in 1x PBS buffer with 0.09% (w/v) sodium azide and 2% sucrose. <i>Note that this product is shipped as lyophilized powder to China customers.</i>
Purification:	Affinity Purified
Conjugation:	Unconjugated
Storage:	Store at -20°C as received.
Stability:	Stable for 12 months from date of receipt.
Predicted Protein Size:	97 kDa
Gene Name:	janus kinase and microtubule interacting protein 1
Database Link:	XP_011511702 Entrez Gene 152789 Human Q96N16
Background:	JAKMIP1 associates with microtubules and may play a role in the microtubule-dependent transport of the GABA-B receptor. It may play a role in JAK1 signaling and regulate microtubule cytoskeleton rearrangements.
Synonyms:	Gababrbp; JAMIP1; MARLIN1
Note:	Immunogen Sequence Homology: Dog: 100%; Pig: 100%; Rat: 100%; Horse: 100%; Human: 100%; Mouse: 100%; Guinea pig: 93%; Bovine: 92%
Protein Families:	Druggable Genome



[View online »](#)

Product images:



WB Suggested Anti-JAKMIP1 Antibody Titration:
0.2-1 ug/ml
Positive Control: Hela cell lysate