

Product datasheet for **TA343990**

HEXIM2 Rabbit Polyclonal Antibody

Product data:

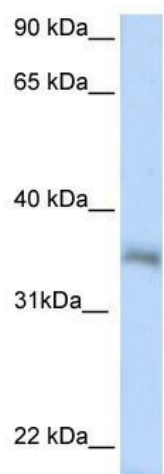
Product Type:	Primary Antibodies
Applications:	WB
Recommended Dilution:	WB
Reactivity:	Human
Host:	Rabbit
Isotype:	IgG
Clonality:	Polyclonal
Immunogen:	The immunogen for anti-HEXIM2 antibody: synthetic peptide directed towards the N terminal of human HEXIM2. Synthetic peptide located within the following region: MATPNQTACNAESPVALEEAKTSGAPGSPQTPPERHDSGGSLPLTPRMES
Formulation:	Liquid. Purified antibody supplied in 1x PBS buffer with 0.09% (w/v) sodium azide and 2% sucrose. <i>Note that this product is shipped as lyophilized powder to China customers.</i>
Purification:	Affinity Purified
Conjugation:	Unconjugated
Storage:	Store at -20°C as received.
Stability:	Stable for 12 months from date of receipt.
Predicted Protein Size:	31 kDa
Gene Name:	hexamethylene bisacetamide inducible 2
Database Link:	NP_653209 Entrez Gene 124790 Human Q96MH2
Background:	HEXIM2 belongs to the HEXIM family. It is transcriptional regulator which functions as a general RNA polymerase II transcription inhibitor. In cooperation with 7SK snRNA, HEXIM2 sequesters P-TEFb in a large inactive 7SK snRNP complex preventing RNA polymerase II phosphorylation and subsequent transcriptional elongation.
Synonyms:	L3
Note:	Immunogen Sequence Homology: Rat: 100%; Human: 100%; Dog: 93%; Pig: 86%; Horse: 79%



[View online »](#)

Protein Families: Transcription Factors

Product images:



WB Suggested Anti-HEXIM2 Antibody Titration:
0.2-1 ug/ml; ELISA Titer: 1: 62500; Positive
Control: 721_B cell lysate