

Product datasheet for **TA343989**

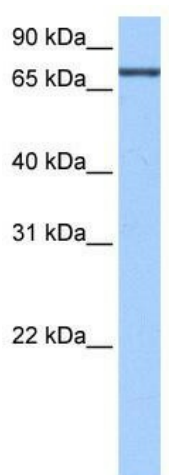
ADAD2 Rabbit Polyclonal Antibody

Product data:

Product Type:	Primary Antibodies
Applications:	WB
Recommended Dilution:	WB
Reactivity:	Human
Host:	Rabbit
Isotype:	IgG
Clonality:	Polyclonal
Immunogen:	The immunogen for anti-ADAD2 antibody: synthetic peptide directed towards the C terminal of human ADAD2. Synthetic peptide located within the following region: TPDTCRGLSLNWSLGDPGIEVVDVATGRVKANAALGPPSRLCKASFLRAF
Formulation:	Liquid. Purified antibody supplied in 1x PBS buffer with 0.09% (w/v) sodium azide and 2% sucrose. <i>Note that this product is shipped as lyophilized powder to China customers.</i>
Purification:	Affinity Purified
Conjugation:	Unconjugated
Storage:	Store at -20°C as received.
Stability:	Stable for 12 months from date of receipt.
Predicted Protein Size:	71 kDa
Gene Name:	adenosine deaminase domain containing 2
Database Link:	NP_631913 Entrez Gene 161931 Human Q8NCV1
Background:	ADAD2 belongs to the ADAD family, and contains 1 A to I editase domain and 1 DRBM (double-stranded RNA-binding) domain. The exact functions of ADAD2 remain unknown.
Synonyms:	TENRL
Note:	Immunogen Sequence Homology: Human: 100%; Dog: 86%; Pig: 86%; Horse: 86%; Guinea pig: 86%; Rat: 79%; Bovine: 79%; Rabbit: 79%



[View online »](#)

Product images:

WB Suggested Anti-ADAD2 Antibody Titration:
0.2-1 ug/ml; Positive Control: HepG2 cell lysate