

Product datasheet for **TA343987**

MSI2 Rabbit Polyclonal Antibody

Product data:

Product Type:	Primary Antibodies
Applications:	IHC, WB
Recommended Dilution:	WB, IHC
Reactivity:	Human
Host:	Rabbit
Isotype:	IgG
Clonality:	Polyclonal
Immunogen:	The immunogen for anti-MSI2 antibody: synthetic peptide directed towards the N terminal of human MSI2. Synthetic peptide located within the following region: LRDYFSKFGI RECMVMRDPTTKRSRGFGVTFADPASVDKVLGQPHHEL
Formulation:	Liquid. Purified antibody supplied in 1x PBS buffer with 0.09% (w/v) sodium azide and 2% sucrose. <i>Note that this product is shipped as lyophilized powder to China customers.</i>
Purification:	Protein A purified
Conjugation:	Unconjugated
Storage:	Store at -20°C as received.
Stability:	Stable for 12 months from date of receipt.
Predicted Protein Size:	36 kDa
Gene Name:	musashi RNA binding protein 2
Database Link:	NP_620412 Entrez Gene 124540 Human Q96DH6
Background:	MSI2 contains two conserved tandem RNA recognition motifs. Similar proteins in other species function as RNA-binding proteins and play central roles in posttranscriptional gene regulation. This gene encodes a protein containing two conserved tandem RNA recognition motifs. Similar proteins in other species function as RNA-binding proteins and play central roles in posttranscriptional gene regulation. Two transcript variants encoding distinct isoforms have been identified for this gene.

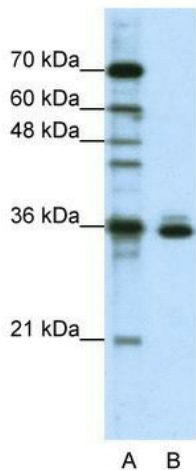


[View online »](#)

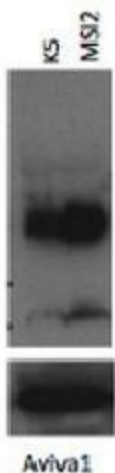
Synonyms: MSI2H

Note: Immunogen Sequence Homology: Pig: 100%; Rat: 100%; Horse: 100%; Human: 100%; Mouse: 100%; Rabbit: 100%; Zebrafish: 100%; Dog: 93%; Bovine: 93%; Guinea pig: 93%

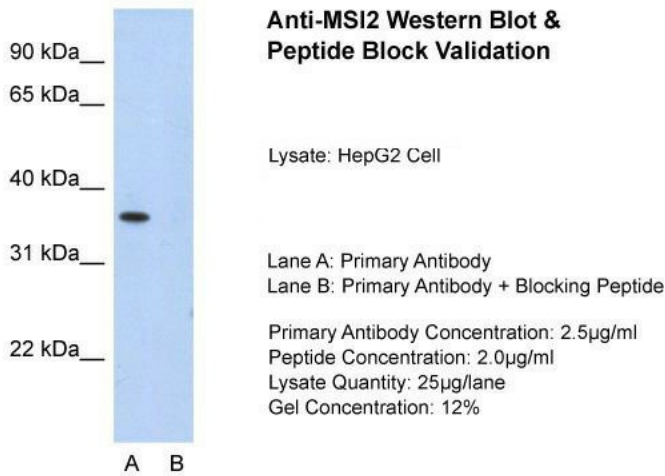
Product images:



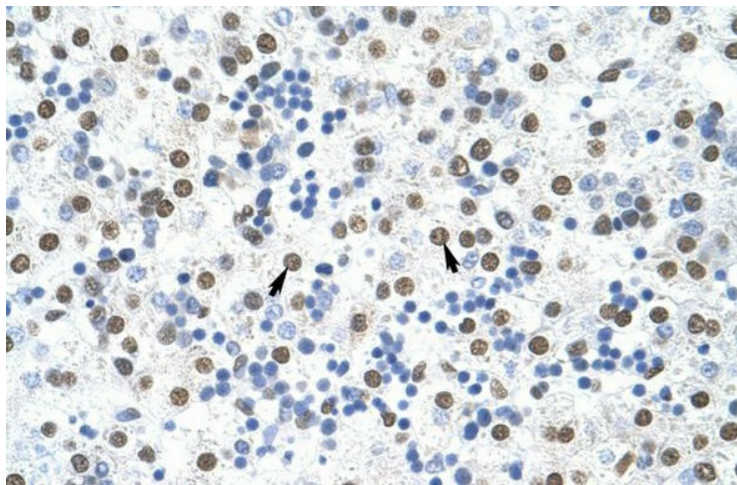
WB Suggested Anti-MSI2 Antibody Titration: 1.25 ug/ml; ELISA Titer: 1: 1562500; Positive Control: HepG2 cell lysate



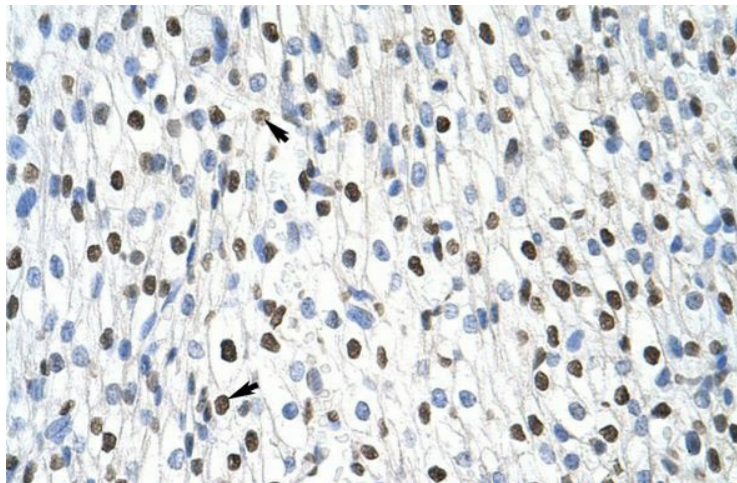
MSI2 antibody - N-terminal region validated by WB using K562 cells lysate at 1: 1000.



Host: Rabbit; Target Name: MSI2; Sample Tissue: HepG2; Lane A: Primary Antibody; Lane B: Primary Antibody + Blocking Peptide; Primary Antibody Concentration: 2.5 ug/mL; Peptide Concentration: 2.0 ug/mL; Lysate Quantity: 25 ug/lane; Gel Concentration: 12%



Rabbit Anti-MSI2 Antibody; Paraffin Embedded Tissue: Human Liver; Cellular Data: Hepatocytes; Antibody Concentration: 4.0-8.0 ug/ml; Magnification: 400X



Rabbit Anti-MSI2 Antibody; Paraffin Embedded Tissue: Human Heart; Cellular Data: Myocardial cells; Antibody Concentration: 4.0-8.0 ug/ml; Magnification: 400X