

Product datasheet for **TA343986**

MSI2 Rabbit Polyclonal Antibody

Product data:

Product Type:	Primary Antibodies
Applications:	WB
Recommended Dilution:	WB
Reactivity:	Human
Host:	Rabbit
Isotype:	IgG
Clonality:	Polyclonal
Immunogen:	The immunogen for anti-MSI2 antibody: synthetic peptide directed towards the N terminal of human MSI2. Synthetic peptide located within the following region: EANGSQGTSGSANDSQHDPGKMFIGGLSWQTSPDSLRYFSKFGEIRECM
Formulation:	Liquid. Purified antibody supplied in 1x PBS buffer with 0.09% (w/v) sodium azide and 2% sucrose. <i>Note that this product is shipped as lyophilized powder to China customers.</i>
Purification:	Affinity Purified
Conjugation:	Unconjugated
Storage:	Store at -20°C as received.
Stability:	Stable for 12 months from date of receipt.
Predicted Protein Size:	35 kDa
Gene Name:	musashi RNA binding protein 2
Database Link:	NP_620412 Entrez Gene 124540 Human Q96DH6
Background:	MSI2 contains two conserved tandem RNA recognition motifs. Similar proteins in other species function as RNA-binding proteins and play central roles in posttranscriptional gene regulation. This gene encodes a protein containing two conserved tandem RNA recognition motifs. Similar proteins in other species function as RNA-binding proteins and play central roles in posttranscriptional gene regulation. Two transcript variants encoding distinct isoforms have been identified for this gene.

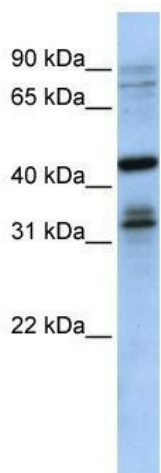


[View online »](#)

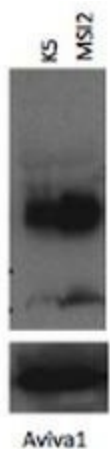
Synonyms: MSI2H

Note: Immunogen Sequence Homology: Pig: 100%; Rat: 100%; Human: 100%; Mouse: 100%; Rabbit: 100%; Zebrafish: 100%

Product images:



WB Suggested Anti-MSI2 Antibody Titration: 0.2-1 ug/ml; ELISA Titer: 1: 1562500; Positive Control: HeLa cell lysate



MSI2 antibody - N-terminal region validated by WB using K562 cells lysate at 1: 1000.