

Product datasheet for **TA343980**

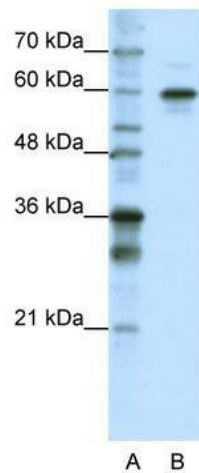
HNRPLL (HNRNPLL) Rabbit Polyclonal Antibody

Product data:

Product Type:	Primary Antibodies
Applications:	IHC, WB
Recommended Dilution:	WB, IHC
Reactivity:	Human
Host:	Rabbit
Isotype:	IgG
Clonality:	Polyclonal
Immunogen:	The immunogen for anti-HNRPLL antibody: synthetic peptide directed towards the N terminal of human HNRPLL. Synthetic peptide located within the following region: RLKTEEGEIDYSAEEGENRREATPRGGGDGGGGGRSFSQPEAGGSHHKVS
Formulation:	Liquid. Purified antibody supplied in 1x PBS buffer with 0.09% (w/v) sodium azide and 2% sucrose. <i>Note that this product is shipped as lyophilized powder to China customers.</i>
Purification:	Protein A purified
Conjugation:	Unconjugated
Storage:	Store at -20°C as received.
Stability:	Stable for 12 months from date of receipt.
Predicted Protein Size:	60 kDa
Gene Name:	heterogeneous nuclear ribonucleoprotein L like
Database Link:	NP_612403 Entrez Gene 92906 Human Q8WVV9
Background:	HNRPLL contains 3 RRM (RNA recognition motif) domains and may bind RNA and plays a role in mRNA processing.
Synonyms:	HNRPLL; SRRF
Note:	Immunogen Sequence Homology: Dog: 100%; Human: 100%; Bovine: 100%; Rabbit: 100%; Pig: 93%; Guinea pig: 93%



[View online »](#)

Product images:


WB Suggested Anti-HNRPLL Antibody Titration: 1.25 ug/ml; Positive Control: HepG2 cell lysate

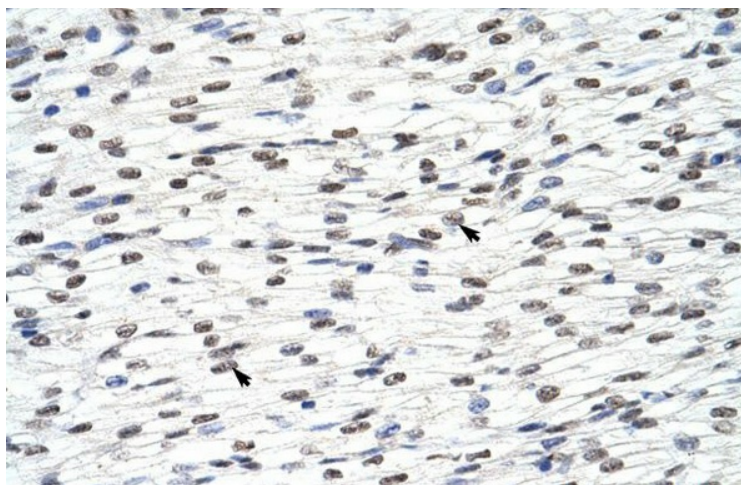

Anti-HNRPLL Western Blot & Peptide Block Validation

Lysate: HepG2 Cell

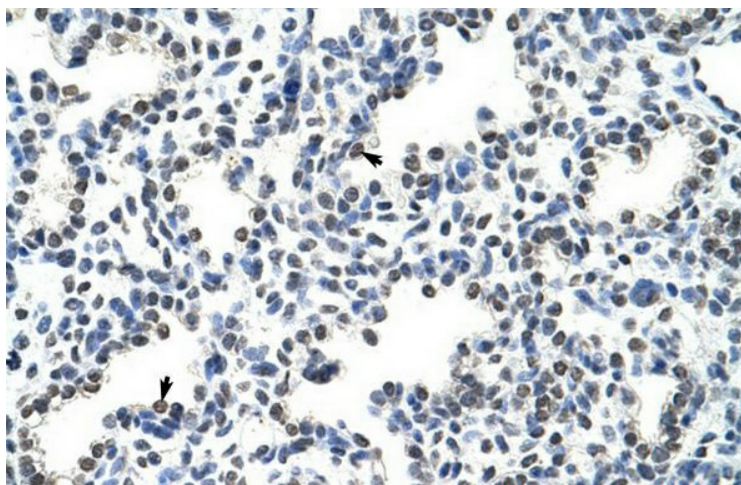
Lane A: Primary Antibody
Lane B: Primary Antibody + Blocking Peptide

Primary Antibody Concentration: 2.5µg/ml
Peptide Concentration: 2.0µg/ml
Lysate Quantity: 25µg/lane
Gel Concentration: 12%

Host: Rabbit; Target Name: HNRPLL; Sample Tissue: HepG2; Lane A: Primary Antibody; Lane B: Primary Antibody + Blocking Peptide; Primary Antibody Concentration: 2.5 ug/mL; Peptide Concentration: 2.0 ug/mL; Lysate Quantity: 25 ug/lane; Gel Concentration: 12



Rabbit Anti-HNRPLL Antibody; Paraffin Embedded Tissue: Human Heart; Cellular Data: Myocardial cells; Antibody Concentration: 4.0-8.0 ug/ml; Magnification: 400X



Rabbit Anti-HNRPLL Antibody; Paraffin Embedded Tissue: Human Lung; Cellular Data: Alveolar cells; Antibody Concentration: 4.0-8.0 ug/ml; Magnification: 400X