

Product datasheet for **TA343978**

TTC14 Rabbit Polyclonal Antibody

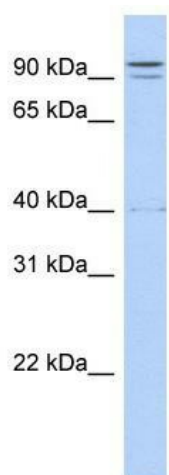
Product data:

Product Type:	Primary Antibodies
Applications:	WB
Recommended Dilution:	WB
Reactivity:	Human
Host:	Rabbit
Isotype:	IgG
Clonality:	Polyclonal
Immunogen:	The immunogen for anti-TTC14 antibody: synthetic peptide directed towards the N terminal of human TTC14. Synthetic peptide located within the following region: MDRDLLRQSLNCHGSSLLSLLRSEQQDNPHFRSLLGSAEPARGPPPQHP
Formulation:	Liquid. Purified antibody supplied in 1x PBS buffer with 0.09% (w/v) sodium azide and 2% sucrose. <i>Note that this product is shipped as lyophilized powder to China customers.</i>
Purification:	Affinity Purified
Conjugation:	Unconjugated
Storage:	Store at -20°C as received.
Stability:	Stable for 12 months from date of receipt.
Predicted Protein Size:	88 kDa
Gene Name:	tetratricopeptide repeat domain 14
Database Link:	NP_597719 Entrez Gene 151613 Human Q96N46
Background:	TTC14 belongs to the TTC14 family and contains 1 S1 motif domain and 4 TPR repeats. The functions of TTC14 remain unknown.
Synonyms:	DRDL5813; PRO19630
Note:	Immunogen Sequence Homology: Dog: 100%; Pig: 100%; Rat: 100%; Horse: 100%; Human: 100%; Mouse: 100%; Bovine: 100%; Rabbit: 100%; Guinea pig: 100%



[View online »](#)

Product images:



WB Suggested Anti-TTC14 Antibody Titration: 0.2-1 ug/ml; ELISA Titer: 1: 62500; Positive Control: Transfected 293T