

Product datasheet for **TA343977**

RAVER1 Rabbit Polyclonal Antibody

Product data:

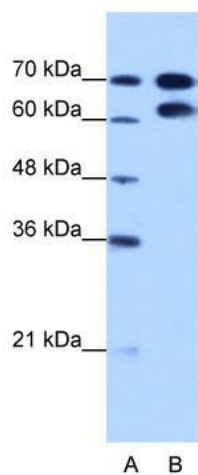
Product Type:	Primary Antibodies
Applications:	IHC, WB
Recommended Dilution:	WB, IHC
Reactivity:	Human
Host:	Rabbit
Isotype:	IgG
Clonality:	Polyclonal
Immunogen:	The immunogen for anti-RAVER1 antibody: synthetic peptide directed towards the N terminal of human RAVER1. Synthetic peptide located within the following region: VTHRPPSPKSGAEVEAGDAAERRAPEEELPPLDPEEIRKRLHETERQFR
Formulation:	Liquid. Purified antibody supplied in 1x PBS buffer with 0.09% (w/v) sodium azide and 2% sucrose. <i>Note that this product is shipped as lyophilized powder to China customers.</i>
Purification:	Protein A purified
Conjugation:	Unconjugated
Storage:	Store at -20°C as received.
Stability:	Stable for 12 months from date of receipt.
Predicted Protein Size:	67 kDa
Gene Name:	ribonucleoprotein, PTB binding 1
Database Link:	NP_597709 Entrez Gene 125950 Human Q8IY67
Background:	RAVER1 contains 3 RRM (RNA recognition motif) domains. It cooperates with PTBP1 to modulate regulated alternative splicing events and promotes exon skipping. It cooperates with PTBP1 to modulate switching between mutually exclusive exons during maturation of the TPM1 pre-mRNA.
Synonyms:	KIAA1978



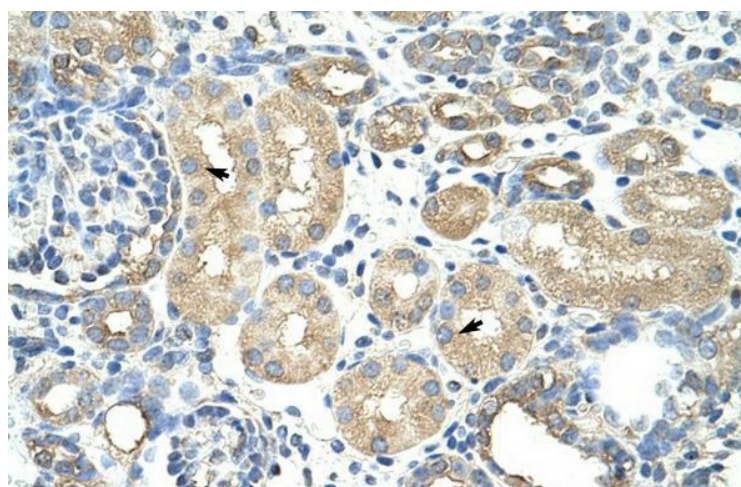
[View online »](#)

Note: Immunogen Sequence Homology: Human: 100%; Horse: 86%; Bovine: 86%; Rabbit: 86%; Dog: 79%; Pig: 79%; Guinea pig: 79%

Product images:



WB Suggested Anti-RAVER1 Antibody Titration: 1.25 ug/ml; Positive Control: HepG2 cell lysate



Rabbit Anti-RAVER1 Antibody; Paraffin Embedded Tissue: Human Kidney; Cellular Data: Epithelial cells of renal tubule; Antibody Concentration: 4.0-8.0 ug/ml; Magnification: 400X