

Product datasheet for **TA343973**

SRRP35 (SRSF12) Rabbit Polyclonal Antibody

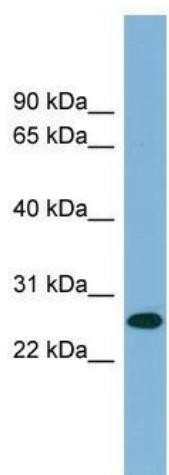
Product data:

Product Type:	Primary Antibodies
Applications:	WB
Recommended Dilution:	WB
Reactivity:	Human
Host:	Rabbit
Isotype:	IgG
Clonality:	Polyclonal
Immunogen:	The immunogen for anti-SRrp35 antibody: synthetic peptide directed towards the middle region of human SRrp35. Synthetic peptide located within the following region: RSRSKSLQKRKSKSIGKSQSSSPQKQTSSGTKSRSHGRHSDSIARSPCKSP
Formulation:	Liquid. Purified antibody supplied in 1x PBS buffer with 0.09% (w/v) sodium azide and 2% sucrose.
Purification:	Affinity Purified
Conjugation:	Unconjugated
Storage:	Store at -20°C as received.
Stability:	Stable for 12 months from date of receipt.
Predicted Protein Size:	30 kDa
Gene Name:	serine/arginine-rich splicing factor 12
Database Link:	NP_542781 Entrez Gene 135295 Human Q8WXF0
Background:	SRrp35 is a splicing factor that seems to antagonize SR proteins in pre-mRNA splicing regulation.
Synonyms:	SFRS13B; SFRS19; SRrp35
Note:	Immunogen Sequence Homology: Dog: 100%; Pig: 100%; Rat: 100%; Horse: 100%; Human: 100%; Bovine: 100%; Rabbit: 100%; Guinea pig: 100%; Mouse: 85%



[View online »](#)

Product images:



WB Suggested Anti-SRrp35 Antibody Titration:
0.2-1 ug/ml; ELISA Titer: 1: 312500; Positive
Control: PANC1 cell lysate