

## Product datasheet for **TA343967**

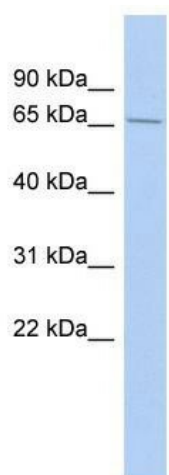
### LARP4 Rabbit Polyclonal Antibody

#### Product data:

Product Type:	Primary Antibodies
Applications:	WB
Recommended Dilution:	WB
Reactivity:	Human
Host:	Rabbit
Isotype:	IgG
Clonality:	Polyclonal
Immunogen:	The immunogen for anti-LARP4 antibody: synthetic peptide directed towards the middle region of human LARP4. Synthetic peptide located within the following region: VSPTKNEDNGAPENSVEKPEKPEARASKDYSGFRGNIIPRGAAGKIREQ
Formulation:	Liquid. Purified antibody supplied in 1x PBS buffer with 0.09% (w/v) sodium azide and 2% sucrose. <i>Note that this product is shipped as lyophilized powder to China customers.</i>
Purification:	Affinity Purified
Conjugation:	Unconjugated
Storage:	Store at -20°C as received.
Stability:	Stable for 12 months from date of receipt.
Predicted Protein Size:	72 kDa
Gene Name:	La ribonucleoprotein domain family member 4
Database Link:	<a href="#">NP_954660</a> <a href="#">Entrez Gene 113251 Human</a> <a href="#">Q71RC2</a>
Background:	The specific function of this protein remains unknown.
Synonyms:	PP13296
Note:	Immunogen Sequence Homology: Horse: 100%; Human: 100%; Pig: 93%; Rat: 93%; Bovine: 93%; Rabbit: 93%; Guinea pig: 93%; Mouse: 92%; Dog: 86%
Protein Families:	Transcription Factors



[View online »](#)

**Product images:**

WB Suggested Anti-LARP4 Antibody Titration: 0.2-1 ug/ml; ELISA Titer: 1: 62500; Positive Control: HT1080 cell lysate. LARP4 is supported by BioGPS gene expression data to be expressed in HT1080