

Product datasheet for **TA343966**

BRUNOL6 (CELF6) Rabbit Polyclonal Antibody

Product data:

Product Type:	Primary Antibodies
Applications:	WB
Recommended Dilution:	WB
Reactivity:	Human
Host:	Rabbit
Isotype:	IgG
Clonality:	Polyclonal
Immunogen:	The immunogen for anti-BRUNOL6 antibody: synthetic peptide directed towards the middle region of human BRUNOL6. Synthetic peptide located within the following region: QAALLAAQGPGLGPVAAVAQMQHVAAFSLVAAPLLPAAAANSPPGSGP
Formulation:	Liquid. Purified antibody supplied in 1x PBS buffer with 0.09% (w/v) sodium azide and 2% sucrose. <i>Note that this product is shipped as lyophilized powder to China customers.</i>
Purification:	Affinity Purified
Conjugation:	Unconjugated
Storage:	Store at -20°C as received.
Stability:	Stable for 12 months from date of receipt.
Predicted Protein Size:	50 kDa
Gene Name:	CUGBP, Elav-like family member 6
Database Link:	NP_443072 Entrez Gene 60677 Human Q96J87



[View online »](#)

Background:

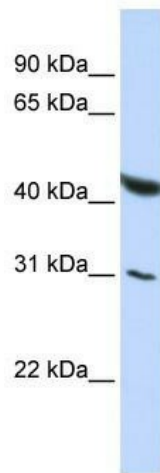
BRUNOL6 is a RNA-binding protein implicated in the regulation of pre-mRNA alternative splicing. It mediates exon inclusion and/or exclusion in pre-mRNAs that are subject to tissue-specific and developmentally regulated alternative splicing. BRUNOL6 specifically activates exon 5 inclusion of TNNT2 in a muscle-specific splicing enhancer (MSE)-dependent manner. It also promotes exon exclusion of INSR pre-mRNA. Members of the CELF/BRUNOL protein family contain two N-terminal RNA recognition motif (RRM) domains, one C-terminal RRM domain, and a divergent segment of 160-230 aa between the second and third RRM domains. Members of this protein family regulate pre-mRNA alternative splicing and may also be involved in mRNA editing, and translation.

Synonyms:

BRUNOL6

Note:

Immunogen Sequence Homology: Pig: 100%; Rat: 100%; Human: 100%; Bovine: 100%; Rabbit: 100%; Guinea pig: 100%; Mouse: 93%

Product images:

WB Suggested Anti-BRUNOL6 Antibody Titration:
0.2-1 ug/ml; ELISA Titer: 1: 62500; Positive
Control: HepG2 cell lysate