

## Product datasheet for **TA343965**

### LARP1 Rabbit Polyclonal Antibody

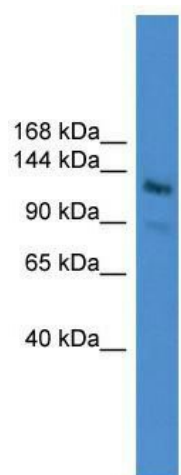
#### Product data:

Product Type:	Primary Antibodies
Applications:	WB
Recommended Dilution:	WB
Reactivity:	Human
Host:	Rabbit
Isotype:	IgG
Clonality:	Polyclonal
Immunogen:	The immunogen for anti-LARP1 antibody: synthetic peptide directed towards the N terminal of human LARP1. Synthetic peptide located within the following region: MATQVEPLLPGGATLLQAEEHGGLVRKKPPPAPEGKGEPPNDVIRGGEPD
Formulation:	Liquid. Purified antibody supplied in 1x PBS buffer with 0.09% (w/v) sodium azide and 2% sucrose. <i>Note that this product is shipped as lyophilized powder to China customers.</i>
Purification:	Affinity Purified
Conjugation:	Unconjugated
Storage:	Store at -20°C as received.
Stability:	Stable for 12 months from date of receipt.
Predicted Protein Size:	123 kDa
Gene Name:	La ribonucleoprotein domain family member 1
Database Link:	<a href="#">NP_291029</a> <a href="#">Entrez Gene 23367 Human</a> <a href="#">Q6PKG0</a>
Background:	LARP1 belongs to the LARP family and it contains 1 HTH La-type RNA-binding domain. The exact function of LARP1 remains unknown.
Synonyms:	KIAA0731; la related protein; La ribonucleoprotein domain family; LARP; member 1; MGC19556
Note:	Immunogen Sequence Homology: Human: 100%; Rabbit: 93%; Mouse: 86%



[View online »](#)

## Product images:



WB Suggested Anti-LARP1 Antibody Titration: 0.2-1 ug/ml; ELISA Titer: 1: 62500; Positive Control: Jurkat cell lysate There is BioGPS gene expression data showing that LARP1 is expressed in Jurkat