

Product datasheet for **TA343964**

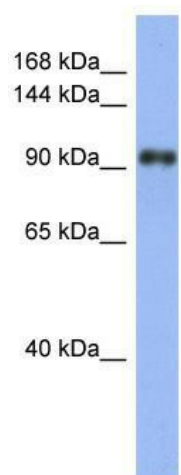
LARP1 Rabbit Polyclonal Antibody

Product data:

Product Type:	Primary Antibodies
Applications:	WB
Recommended Dilution:	WB
Reactivity:	Human
Host:	Rabbit
Isotype:	IgG
Clonality:	Polyclonal
Immunogen:	The immunogen for anti-LARP1 antibody: synthetic peptide directed towards the N terminal of human LARP1. Synthetic peptide located within the following region: HKSVQPQSHKPQPTRKLPPKDMKEQEKGEGSDSKESPCKTKSDESGEEN
Formulation:	Liquid. Purified antibody supplied in 1x PBS buffer with 0.09% (w/v) sodium azide and 2% sucrose. <i>Note that this product is shipped as lyophilized powder to China customers.</i>
Purification:	Affinity Purified
Conjugation:	Unconjugated
Storage:	Store at -20°C as received.
Stability:	Stable for 12 months from date of receipt.
Predicted Protein Size:	116 kDa
Gene Name:	La ribonucleoprotein domain family member 1
Database Link:	NP_056130 Entrez Gene 23367 Human Q6PKG0
Background:	LARP1 belongs to the LARP family and it contains 1 HTH La-type RNA-binding domain. The exact function of LARP1 remains unknown.
Synonyms:	LARP
Note:	Immunogen Sequence Homology: Dog: 100%; Pig: 100%; Rat: 100%; Horse: 100%; Human: 100%; Bovine: 100%; Rabbit: 100%; Guinea pig: 100%; Mouse: 93%



[View online »](#)

Product images:

WB Suggested Anti-LARP1 Antibody Titration: 0.2-1 ug/ml; ELISA Titer: 1: 312500; Positive Control: Human Stomach