

Product datasheet for **TA343962**

Pur B (PURB) Rabbit Polyclonal Antibody

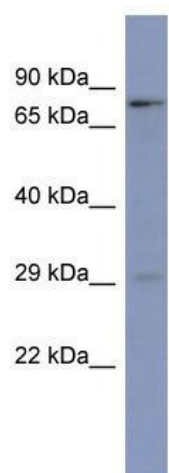
Product data:

Product Type:	Primary Antibodies
Applications:	WB
Recommended Dilution:	WB
Reactivity:	Human
Host:	Rabbit
Isotype:	IgG
Clonality:	Polyclonal
Immunogen:	The immunogen for anti-PURB antibody: synthetic peptide directed towards the N terminal of human PURB. Synthetic peptide located within the following region: MADGDSGSRGGGGGPCGFQPASRGGGEQETQELASKRLDIQNKRFYLDV
Formulation:	Liquid. Purified antibody supplied in 1x PBS buffer with 0.09% (w/v) sodium azide and 2% sucrose. <i>Note that this product is shipped as lyophilized powder to China customers.</i>
Purification:	Affinity Purified
Conjugation:	Unconjugated
Storage:	Store at -20°C as received.
Stability:	Stable for 12 months from date of receipt.
Predicted Protein Size:	33 kDa
Gene Name:	purine-rich element binding protein B
Database Link:	NP_150093 Entrez Gene 5814 Human Q96QR8
Background:	This gene product is a sequence-specific, single-stranded DNA-binding protein. It binds preferentially to the single strand of the purine-rich element termed PUR, which is present at origins of replication and in gene flanking regions in a variety of euka
Synonyms:	PURBETA
Note:	Immunogen Sequence Homology: Human: 100%; Mouse: 100%; Bovine: 100%; Rabbit: 100%; Zebrafish: 100%; Rat: 78%



[View online »](#)

Product images:



WB Suggested Anti-PURB Antibody Titration: 0.2-1 ug/ml; ELISA Titer: 1: 62500; Positive Control: THP-1 cell lysate