

## Product datasheet for **TA343960**

### ZCRB1 Rabbit Polyclonal Antibody

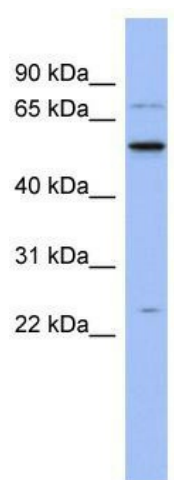
#### Product data:

Product Type:	Primary Antibodies
Applications:	WB
Recommended Dilution:	WB
Reactivity:	Human
Host:	Rabbit
Isotype:	IgG
Clonality:	Polyclonal
Immunogen:	The immunogen for anti-ZCRB1 antibody: synthetic peptide directed towards the N terminal of human ZCRB1. Synthetic peptide located within the following region: MSGGLAPSKSTVYVSNLPSLTTNDLYRIFSKYGKVVKVTIMKDKDTRKS
Formulation:	Liquid. Purified antibody supplied in 1x PBS buffer with 0.09% (w/v) sodium azide and 2% sucrose. <i>Note that this product is shipped as lyophilized powder to China customers.</i>
Purification:	Affinity Purified
Conjugation:	Unconjugated
Storage:	Store at -20°C as received.
Stability:	Stable for 12 months from date of receipt.
Predicted Protein Size:	24 kDa
Gene Name:	zinc finger CCHC-type and RNA binding motif containing 1
Database Link:	<a href="#">NP_149105</a> <a href="#">Entrez Gene 85437 Human</a> <a href="#">Q8TBF4</a>
Background:	Pre-mRNA splicing is catalyzed by the spliceosome. U12-type spliceosome binds U12-type pre-mRNAs and recognizes the 5' splice site and branch-point sequence. U11 and U12 snRNPs are components of U12-type spliceosome and function as a molecular bridge conn
Synonyms:	MADP-1; MADP1; RBM36; SNRNP31; ZCCHC19
Note:	Immunogen Sequence Homology: Dog: 100%; Pig: 100%; Rat: 100%; Horse: 100%; Human: 100%; Mouse: 100%; Bovine: 100%; Rabbit: 100%; Guinea pig: 100%; Yeast: 91%



[View online »](#)

## Product images:



WB Suggested Anti-ZCRB1 Antibody Titration: 0.2-1 ug/ml; ELISA Titer: 1: 312500; Positive Control: Human Spleen