

Product datasheet for **TA343957**

NXF5 Rabbit Polyclonal Antibody

Product data:

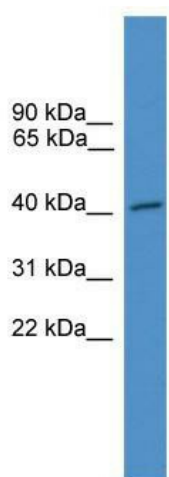
Product Type:	Primary Antibodies
Applications:	WB
Recommended Dilution:	WB
Reactivity:	Human
Host:	Rabbit
Isotype:	IgG
Clonality:	Polyclonal
Immunogen:	The immunogen for anti-NXF5 antibody: synthetic peptide directed towards the C terminal of human NXF5. Synthetic peptide located within the following region: FTPVDFHYIRNRACFFVQVASAASALKDVSYKIYDDENQKICIFVSHFTA
Formulation:	Liquid. Purified antibody supplied in 1x PBS buffer with 0.09% (w/v) sodium azide and 2% sucrose.
Purification:	Affinity Purified
Conjugation:	Unconjugated
Storage:	Store at -20°C as received.
Stability:	Stable for 12 months from date of receipt.
Predicted Protein Size:	45 kDa
Gene Name:	nuclear RNA export factor 5
Database Link:	NP_116564 Entrez Gene 55998 Human Q9H1B4
Background:	NXF5 is one member of a family of nuclear RNA export factors. Common domain features of this family are a noncanonical RNP-type RNA-binding domain (RBD), 4 leucine-rich repeats (LRRs), a nuclear transport factor 2 (NTF2)-like domain that allows heterodimerization with NTF2-related export protein-1 (NXT1), and a ubiquitin-associated domain that mediates interactions with nucleoporins. The LRRs and NTF2-like domains are required for export activity.
Synonyms:	TAPL-1; TAPL1



[View online »](#)

Note: Immunogen Sequence Homology: Human: 100%; Dog: 86%; Bovine: 86%; Rabbit: 79%

Product images:



WB Suggested Anti-NXF5 Antibody Titration: 0.2-1 ug/ml; ELISA Titer: 1: 312500; Positive Control: COLO205 cell lysate