

## Product datasheet for **TA343956**

### **NXF5 Rabbit Polyclonal Antibody**

#### **Product data:**

<b>Product Type:</b>	Primary Antibodies
<b>Applications:</b>	IHC, WB
<b>Recommended Dilution:</b>	WB, IHC
<b>Reactivity:</b>	Human
<b>Host:</b>	Rabbit
<b>Isotype:</b>	IgG
<b>Clonality:</b>	Polyclonal
<b>Immunogen:</b>	The immunogen for anti-NXF5 antibody: synthetic peptide directed towards the middle region of human NXF5. Synthetic peptide located within the following region: ITERNFPELLSLNLCNNKLYQLDGLSDITEKAPKVKTLNLSKNKLESAWE
<b>Formulation:</b>	Liquid. Purified antibody supplied in 1x PBS buffer with 0.09% (w/v) sodium azide and 2% sucrose. <i>Note that this product is shipped as lyophilized powder to China customers.</i>
<b>Purification:</b>	Affinity Purified
<b>Conjugation:</b>	Unconjugated
<b>Storage:</b>	Store at -20°C as received.
<b>Stability:</b>	Stable for 12 months from date of receipt.
<b>Predicted Protein Size:</b>	44 kDa
<b>Gene Name:</b>	nuclear RNA export factor 5
<b>Database Link:</b>	<a href="#">NP_116564</a> <a href="#">Entrez Gene 55998 Human Q9H1B4</a>



[View online »](#)

**Background:**

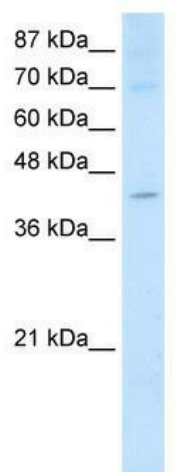
NXF5 is one member of a family of nuclear RNA export factors. Common domain features of this family are a noncanonical RNP-type RNA-binding domain (RBD), 4 leucine-rich repeats (LRRs), a nuclear transport factor 2 (NTF2)-like domain that allows heterodimerization with NTF2-related export protein-1 (NXT1), and a ubiquitin-associated domain that mediates interactions with nucleoporins. The LRRs and NTF2-like domains are required for export activity. This gene is one member of a family of nuclear RNA export factor genes. Common domain features of this family are a noncanonical RNP-type RNA-binding domain (RBD), 4 leucine-rich repeats (LRRs), a nuclear transport factor 2 (NTF2)-like domain that allows heterodimerization with NTF2-related export protein-1 (NXT1), and a ubiquitin-associated domain that mediates interactions with nucleoporins. The LRRs and NTF2-like domains are required for export activity. Alternative splicing seems to be a common mechanism in this gene family. Five transcript variants that encode different isoforms have been found for this gene.

**Synonyms:**

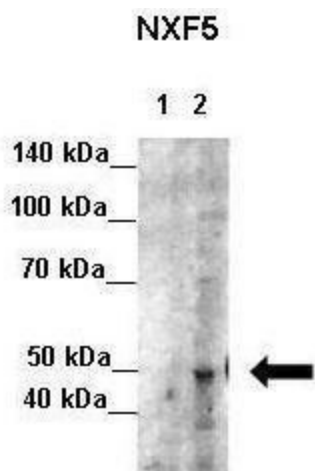
TAPL-1; TAPL1

**Note:**

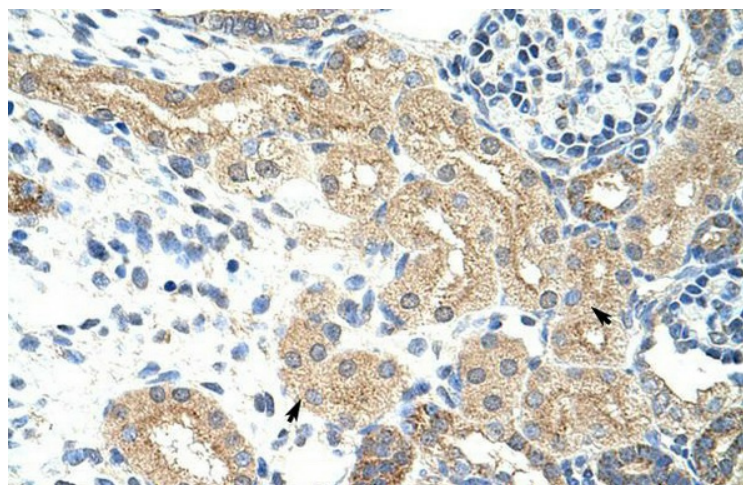
Immunogen Sequence Homology: Human: 100%; Dog: 86%; Rat: 86%; Rabbit: 86%; Mouse: 79%

**Product images:**

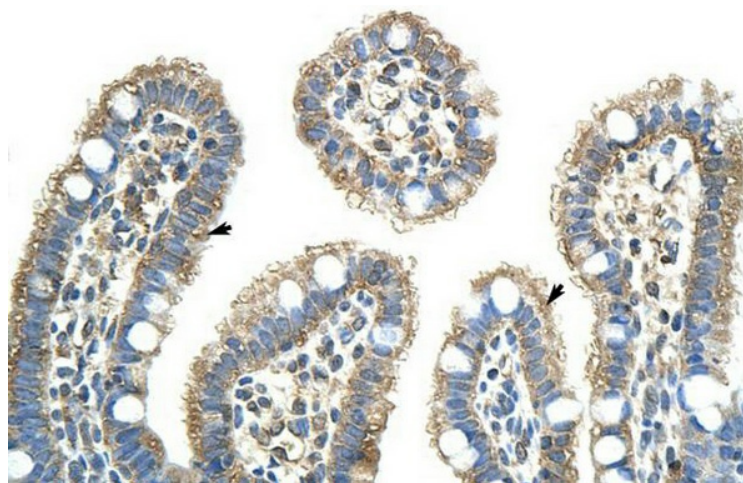
WB Suggested Anti-NXF5 Antibody Titration: 2.5 ug/ml; Positive Control: Jurkat cell lysate



Lanes: Lane 1: 7ug HeLa cytosolic extract; Lane 2: 7ug HeLa nuclear extract; Primary Antibody Dilution: 1: 100; Secondary Antibody: Anti-rabbit-HRP; Secondary Antibody Dilution: 1: 500; Gene Name: NXF5;



Rabbit Anti-NXF5 Antibody; Paraffin Embedded Tissue: Human Kidney; Cellular Data: Epithelial cells of renal tubule; Antibody Concentration: 4.0-8.0 ug/ml; Magnification: 400X



Rabbit Anti-NXF5 Antibody; Paraffin Embedded Tissue: Human Intestine; Cellular Data: Epithelial cells of intestinal villas; Antibody Concentration: 4.0-8.0 ug/ml; Magnification: 400X