

Product datasheet for **TA343952**

THOC3 Rabbit Polyclonal Antibody

Product data:

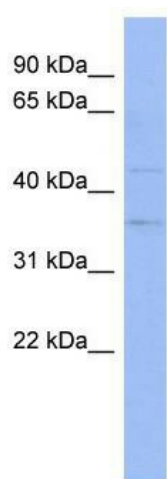
Product Type:	Primary Antibodies
Applications:	WB
Recommended Dilution:	WB
Reactivity:	Human
Host:	Rabbit
Isotype:	IgG
Clonality:	Polyclonal
Immunogen:	The immunogen for anti-THOC3 antibody: synthetic peptide directed towards the middle region of human THOC3. Synthetic peptide located within the following region: LWEVQCESPTFTVAWHPKRPLLAFCDDKDGKYDSSREAGTVKLFGLPND
Formulation:	Liquid. Purified antibody supplied in 1x PBS buffer with 0.09% (w/v) sodium azide and 2% sucrose. <i>Note that this product is shipped as lyophilized powder to China customers.</i>
Purification:	Affinity Purified
Conjugation:	Unconjugated
Storage:	Store at -20°C as received.
Stability:	Stable for 12 months from date of receipt.
Predicted Protein Size:	39 kDa
Gene Name:	THO complex 3
Database Link:	NP_115737 Entrez Gene 84321 Human Q96J01
Background:	THOC3 is part of the TREX (transcription/export) complex, which includes THO2, HPR1, ALY, and UAP56.
Synonyms:	hTREX45; THO3
Note:	Immunogen Sequence Homology: Dog: 100%; Pig: 100%; Rat: 100%; Horse: 100%; Human: 100%; Mouse: 100%; Bovine: 100%; Rabbit: 100%; Guinea pig: 100%; Zebrafish: 86%



[View online »](#)

Protein Pathways: Spliceosome

Product images:



WB Suggested Anti-THOC3 Antibody Titration:
0.2-1 ug/ml; ELISA Titer: 1: 62500; Positive
Control: Human Spleen