

Product datasheet for **TA343950**

BRD9 Rabbit Polyclonal Antibody

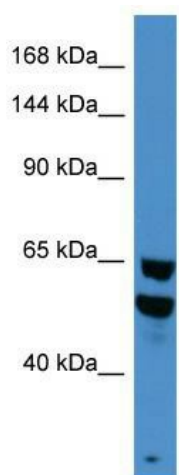
Product data:

Product Type:	Primary Antibodies
Applications:	WB
Recommended Dilution:	WB
Reactivity:	Human
Host:	Rabbit
Isotype:	IgG
Clonality:	Polyclonal
Immunogen:	The immunogen for Anti-BRD9 antibody is: synthetic peptide directed towards the N-terminal region of Human BRD9. Synthetic peptide located within the following region: YYDDRSDDHERERHKEKKKKKKKSEKEKHLDDDEERRKRKEEKRRKREH
Formulation:	Liquid. Purified antibody supplied in 1x PBS buffer with 0.09% (w/v) sodium azide and 2% sucrose. <i>Note that this product is shipped as lyophilized powder to China customers.</i>
Purification:	Affinity Purified
Conjugation:	Unconjugated
Storage:	Store at -20°C as received.
Stability:	Stable for 12 months from date of receipt.
Predicted Protein Size:	65 kDa
Gene Name:	bromodomain containing 9
Database Link:	NP_076413 Entrez Gene 65980 Human Q9H8M2
Background:	BRD9 may play a role in chromatin remodeling and regulation of transcription.
Synonyms:	LAVS3040; PRO9856
Note:	Immunogen Sequence Homology: Dog: 100%; Pig: 100%; Rat: 100%; Horse: 100%; Human: 100%; Mouse: 100%; Bovine: 100%; Rabbit: 100%; Guinea pig: 100%; Yeast: 92%; Zebrafish: 75%



[View online »](#)

Product images:



Host: Rabbit; Target Name: BRD9; Sample Tissue: HepG2 Whole cell lysates; Antibody Dilution: 1.0 ug/ml