

Product datasheet for **TA343949**

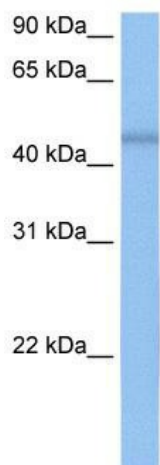
RBM48 Rabbit Polyclonal Antibody

Product data:

Product Type:	Primary Antibodies
Applications:	WB
Recommended Dilution:	WB
Reactivity:	Human
Host:	Rabbit
Isotype:	IgG
Clonality:	Polyclonal
Immunogen:	The immunogen for anti-DKFZP564O0523 antibody: synthetic peptide directed towards the C terminal of human DKFZP564O0523. Synthetic peptide located within the following region: FLQTNPTGNEIMIGPLLPDISKVDMDHDDSLNNTANLIRHKLKEVISSVPK
Formulation:	Liquid. Purified antibody supplied in 1x PBS buffer with 0.09% (w/v) sodium azide and 2% sucrose.
Purification:	Affinity Purified
Conjugation:	Unconjugated
Storage:	Store at -20°C as received.
Stability:	Stable for 12 months from date of receipt.
Predicted Protein Size:	42 kDa
Gene Name:	RNA binding motif protein 48
Database Link:	NP_115496 Entrez Gene 84060 Human Q5RL73
Background:	The exact functions of DKFZP564O0523 remain unknown.
Synonyms:	C7orf64; HSPC304; MGC16142
Note:	Immunogen Sequence Homology: Human: 100%; Dog: 93%; Pig: 93%; Rat: 93%; Horse: 86%; Mouse: 86%; Guinea pig: 86%; Zebrafish: 83%



[View online »](#)

Product images:

WB Suggested Anti-DKFZP564O0523 Antibody Titration: 0.2-1 ug/ml; Positive Control: MCF7 cell lysate; There is BioGPS gene expression data showing that RBM48 is expressed in MCF7