

Product datasheet for **TA343947**

SFRS2B (SRSF8) Rabbit Polyclonal Antibody

Product data:

Product Type:	Primary Antibodies
Applications:	IHC, WB
Recommended Dilution:	WB
Reactivity:	Human
Host:	Rabbit
Isotype:	IgG
Clonality:	Polyclonal
Immunogen:	The immunogen for anti-SFRS2B antibody: synthetic peptide directed towards the middle region of human SFRS2B. Synthetic peptide located within the following region: YRESRYGGSHYSSSGYNSRYSRYHSSRSRSHKSGSSTSSRSASTSKSSA
Formulation:	Liquid. Purified antibody supplied in 1x PBS buffer with 0.09% (w/v) sodium azide and 2% sucrose. <i>Note that this product is shipped as lyophilized powder to China customers.</i>
Purification:	Affinity Purified
Conjugation:	Unconjugated
Storage:	Store at -20°C as received.
Stability:	Stable for 12 months from date of receipt.
Predicted Protein Size:	32 kDa
Gene Name:	serine/arginine-rich splicing factor 8
Database Link:	NP_115285 Entrez Gene 10929 Human Q9BRL6



[View online »](#)

Background:

The SR (serine/arginine-rich) family contains a number of phosphoproteins that function as essential and alternative splicing factors. The SR family of proteins is characterized by the presence of a ribonucleoprotein (RNP)-type RNA binding motif and a carboxyl-terminal arginine-serine-rich (RS) domain. SFRS2B is a member of the SR family and functions as an essential splicing factor in vitro. The SR (serine/arginine-rich) family contains a number of phosphoproteins that function as essential and alternative splicing factors. The SR family of proteins is characterized by the presence of a ribonucleoprotein (RNP)-type RNA binding motif and a carboxyl-terminal arginine-serine-rich (RS) domain. The protein encoded by this gene is a member of the SR family and functions as an essential splicing factor in vitro. This gene is thought to be an expressed PR264/SC35 retroseudogene.

Synonyms:

DSM-1; SFRS2B; SRP46

Note:

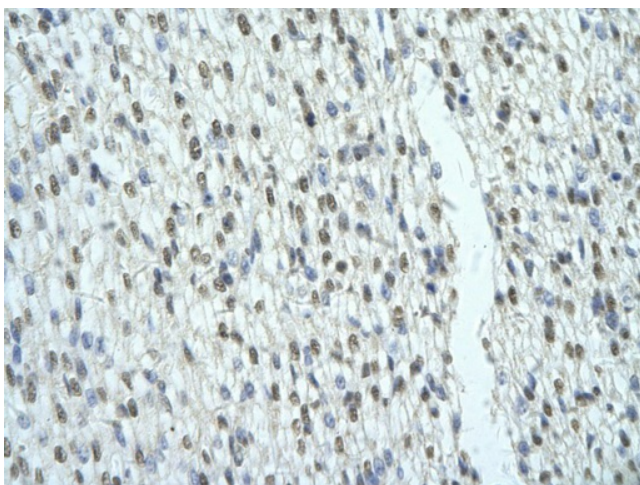
Immunogen Sequence Homology: Human: 100%

Protein Pathways:

Spliceosome

Product images:

WB Suggested Anti-SFRS2B Antibody Titration: 0.2-1 ug/ml; ELISA Titer: 1: 62500; Positive Control: 721_B cell lysate SRSF8 is strongly supported by BioGPS gene expression data to be expressed in Human 721_B cells



Rabbit Anti-SFRS2B antibody; Paraffin Embedded Tissue: Human Heart cell Cellular Data: cardiac cell of renal tubule; Antibody Concentration: 4.0-8.0 ug/ml; Magnification: 400X