

Product datasheet for **TA343946**

EIF2A Rabbit Polyclonal Antibody

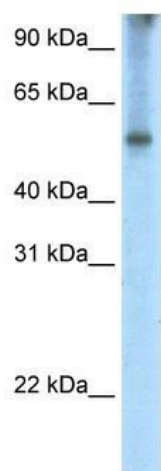
Product data:

Product Type:	Primary Antibodies
Applications:	IHC, WB
Recommended Dilution:	WB, IHC
Reactivity:	Human
Host:	Rabbit
Isotype:	IgG
Clonality:	Polyclonal
Immunogen:	The immunogen for anti-EIF2A antibody: synthetic peptide directed towards the C terminal of human EIF2A. Synthetic peptide located within the following region: DKSPDLAPTAPQSTPRNTVSQISGDPEIDKKIKNLKKLKAIEQLKEQ
Formulation:	Liquid. Purified antibody supplied in 1x PBS buffer with 0.09% (w/v) sodium azide and 2% sucrose. <i>Note that this product is shipped as lyophilized powder to China customers.</i>
Purification:	Protein A purified
Conjugation:	Unconjugated
Storage:	Store at -20°C as received.
Stability:	Stable for 12 months from date of receipt.
Predicted Protein Size:	64 kDa
Gene Name:	eukaryotic translation initiation factor 2A
Database Link:	NP_114414 Entrez Gene 83939 Human Q9BY44
Background:	EIF2A is a 65-kD protein that catalyzes the formation of puromycin-sensitive 80S preinitiation complexes. EIF2A is a 65-kD protein that catalyzes the formation of puromycin-sensitive 80S preinitiation complexes (Zoll et al., 2002). [supplied by OMIM]
Synonyms:	CDA02; EIF-2A; MST089; MSTP004; MSTP089
Note:	Immunogen Sequence Homology: Dog: 100%; Rat: 100%; Human: 100%; Pig: 93%; Mouse: 93%; Rabbit: 93%; Zebrafish: 93%; Guinea pig: 93%; Horse: 86%; Bovine: 86%; Goat: 83%

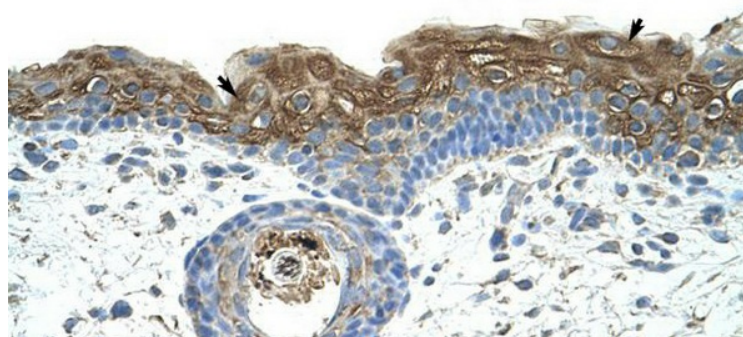


[View online »](#)

Product images:



WB Suggested Anti-EIF2A Antibody Titration: 2.5 ug/ml; Positive Control: Human Thymus



Rabbit Anti-EIF2A Antibody; Paraffin Embedded Tissue: Human Skin; Cellular Data: Epidermal cells; Antibody Concentration: 4.0-8.0 ug/ml; Magnification: 400X