

Product datasheet for **TA343945**

RBM4B Rabbit Polyclonal Antibody

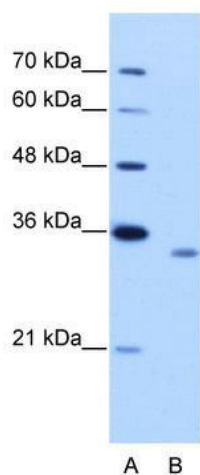
Product data:

Product Type:	Primary Antibodies
Applications:	IHC, WB
Recommended Dilution:	WB, IHC
Reactivity:	Human
Host:	Rabbit
Isotype:	IgG
Clonality:	Polyclonal
Immunogen:	The immunogen for anti-RBM4B antibody: synthetic peptide directed towards the C terminal of human RBM4B. Synthetic peptide located within the following region: AAAATTSSYYGRDRSPLRRAAAMLPTVGEGYGYGPESELSQASAATRNSL
Formulation:	Liquid. Purified antibody supplied in 1x PBS buffer with 0.09% (w/v) sodium azide and 2% sucrose.
Purification:	Protein A purified
Conjugation:	Unconjugated
Storage:	Store at -20°C as received.
Stability:	Stable for 12 months from date of receipt.
Predicted Protein Size:	39 kDa
Gene Name:	RNA binding motif protein 4B
Database Link:	NP_113680 Entrez Gene 83759 Human Q9BQ04
Background:	RBM4B contains 1 CCHC-type zinc finger and 2 RRM (RNA recognition motif) domains. It may play a role in alternative splice site selection during pre-mRNA processing.
Synonyms:	RBM4L; RBM30; ZCCHC15; ZCCHC21B; ZCRB3B
Note:	Immunogen Sequence Homology: Pig: 100%; Horse: 100%; Human: 100%; Bovine: 100%; Dog: 93%; Rabbit: 93%; Guinea pig: 93%; Rat: 86%; Mouse: 86%; Goat: 85%

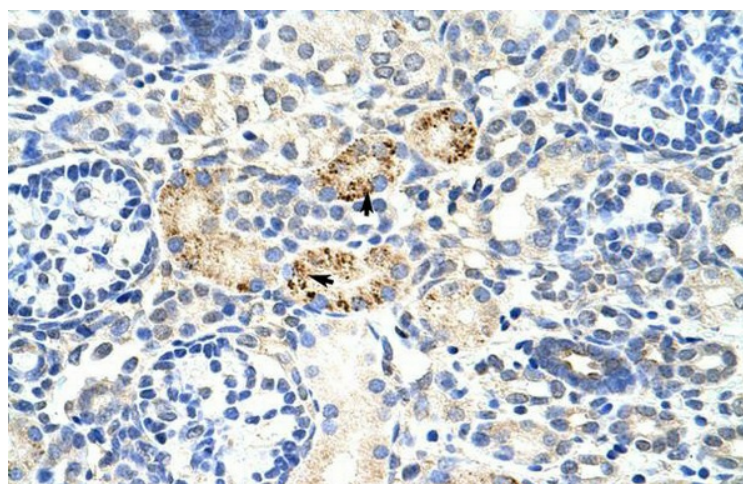


[View online »](#)

Product images:



WB Suggested Anti-RBM4B Antibody Titration: 2.5 ug/ml; Positive Control: Jurkat cell lysate RBM4B is supported by BioGPS gene expression data to be expressed in Jurkat



Rabbit Anti-RBM4B Antibody; Paraffin Embedded Tissue: Human Kidney; Cellular Data: Epithelial cells of renal tubule; Antibody Concentration: 4.0-8.0 ug/ml; Magnification: 400X