

Product datasheet for **TA343941**

SLIRP Rabbit Polyclonal Antibody

Product data:

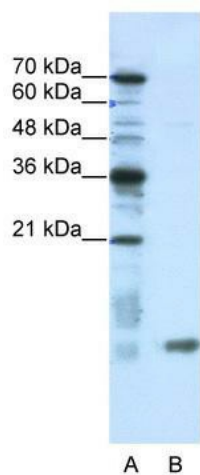
Product Type:	Primary Antibodies
Applications:	WB
Recommended Dilution:	WB
Reactivity:	Human
Host:	Rabbit
Isotype:	IgG
Clonality:	Polyclonal
Immunogen:	The immunogen for anti-C14ORF156 antibody: synthetic peptide directed towards the N terminal of human C14ORF156. Synthetic peptide located within the following region: PFDKETGFHRGLGWVQFSSEGLRNALQQENHIIDGVKQVHTRRPKLPQ
Formulation:	Liquid. Purified antibody supplied in 1x PBS buffer with 0.09% (w/v) sodium azide and 2% sucrose. <i>Note that this product is shipped as lyophilized powder to China customers.</i>
Purification:	Affinity Purified
Conjugation:	Unconjugated
Storage:	Store at -20°C as received.
Stability:	Stable for 12 months from date of receipt.
Predicted Protein Size:	12 kDa
Gene Name:	SRA stem-loop interacting RNA binding protein
Database Link:	NP_112487 Entrez Gene 81892 Human Q9GZT3
Background:	As a RNA-binding protein, C14orf156 acts as a nuclear receptor corepressor. It probably acts by binding the SRA RNA, and repressing the SRA-mediated nuclear receptor coactivation. C14orf156 binds the STR7 loop of SRA RNA. It is also able to repress glucocorticoid (GR), androgen (AR), thyroid (TR) and VDR-mediated transactivation.
Synonyms:	C14orf156; DC50; PD04872



[View online »](#)

Note: Immunogen Sequence Homology: Human: 100%; Horse: 86%; Sheep: 86%; Bovine: 86%; Rabbit: 86%; Dog: 79%; Pig: 79%

Product images:



WB Suggested Anti-C14ORF156 Antibody
Titration: 0.2-1 ug/ml; Positive Control: HepG2 cell lysate; SLIRP is supported by BioGPS gene expression data to be expressed in HepG2